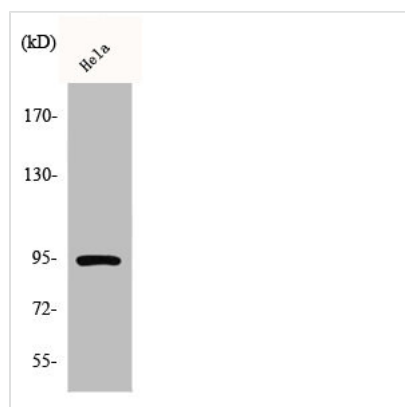




Phospho-STAT6 (Y641) Antibody

Product Code	CSB-PA000625
Storage	Upon receipt, store at -20°C or -80°C. Avoid repeated freeze.
Uniprot No.	P42226
Immunogen	Synthesized peptide derived from Human Stat6 around the phosphorylation site of Y641.
Raised In	Rabbit
Species Reactivity	Human,Mouse,Rat
Tested Applications	WB, IHC, ELISA; WB:1:500-1:2000, IHC:1:100-1:300, ELISA:1:10000
Form	Liquid
Conjugate	Non-conjugated
Storage Buffer	Liquid in PBS containing 50% glycerol, 0.5% BSA and 0.02% sodium azide.
Purification Method	The antibody was affinity-purified from rabbit antiserum by affinity-chromatography using epitope-specific immunogen.
Isotype	IgG
Alias	STAT6; Signal transducer and activator of transcription 6; IL-4 Stat
Immunogen Species	Homo sapiens (Human)
Target Names	STAT6

Image



Western Blot analysis of HeLa cells using Phospho-Stat6 (Y641) Polyclonal Antibody

Usage

For Research Use Only. Not for use in diagnostic or therapeutic procedures.