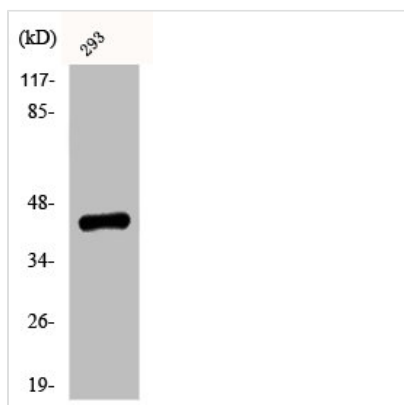




Phospho-EFNB1/EFNB2 (Y330) Antibody

Product Code	CSB-PA000635
Storage	Upon receipt, store at -20°C or -80°C. Avoid repeated freeze.
Uniprot No.	P98172/P52799
Immunogen	Synthesized peptide derived from Human Ephrin-B1/2 around the phosphorylation site of Y330.
Raised In	Rabbit
Species Reactivity	Human, Mouse, Rat
Tested Applications	WB, ELISA; WB:1:500-1:2000, ELISA:1:40000
Form	Liquid
Conjugate	Non-conjugated
Storage Buffer	Liquid in PBS containing 50% glycerol, 0.5% BSA and 0.02% sodium azide.
Purification Method	The antibody was affinity-purified from rabbit antiserum by affinity-chromatography using epitope-specific immunogen.
Isotype	IgG
Alias	EFNB1; EFL3; EPLG2; LERK2; Ephrin-B1; EFL-3; ELK ligand; ELK-L; EPH-related receptor tyrosine kinase ligand 2; LERK-2; EFNB2; EPLG5; HTKL; LERK5; Ephrin-B2; EPH-related receptor tyrosine kinase ligand 5; LERK-5; HTK ligand; HTK-L
Immunogen Species	Homo sapiens (Human)
Target Names	EFNB1/EFNB2

Image



Western Blot analysis of 293 cells using Phospho-Ephrin-B1/2 (Y330) Polyclonal Antibody

Usage

For Research Use Only. Not for use in diagnostic or therapeutic procedures.