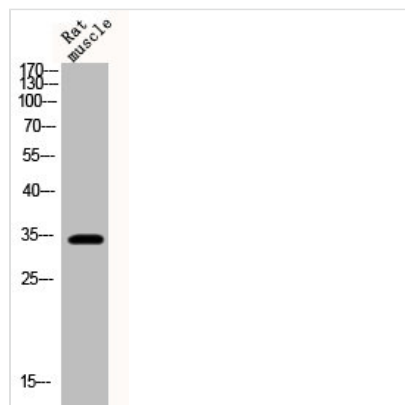




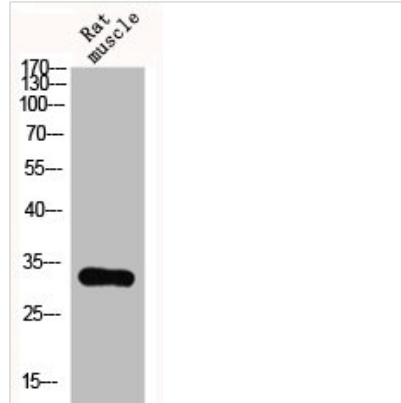
Phospho-CCND1 (T286) Antibody

Product Code	CSB-PA000642
Storage	Upon receipt, store at -20°C or -80°C. Avoid repeated freeze.
Uniprot No.	P24385
Immunogen	Synthesized peptide derived from Human Cyclin D1 around the phosphorylation site of T286.
Raised In	Rabbit
Species Reactivity	Human, Mouse, Rat
Tested Applications	WB, IHC, ELISA; WB:1:500-1:2000, IHC:1:100-1:300, ELISA:1:10000
Form	Liquid
Conjugate	Non-conjugated
Storage Buffer	Liquid in PBS containing 50% glycerol, 0.5% BSA and 0.02% sodium azide.
Purification Method	The antibody was affinity-purified from rabbit antiserum by affinity-chromatography using epitope-specific immunogen.
Isotype	IgG
Alias	CCND1; BCL1; PRAD1; G1/S-specific cyclin-D1; B-cell lymphoma 1 protein; BCL-1; BCL-1 oncogene; PRAD1 oncogene
Immunogen Species	Homo sapiens (Human)
Target Names	CCND1

Image



Western Blot analysis of rat-muscle cells using Phospho-Cyclin D1 (T286) Polyclonal Antibody



Western Blot analysis of RAT-MUSCLE cells using Phospho-Cyclin D1 (T286) Polyclonal Antibody

Usage

For Research Use Only. Not for use in diagnostic or therapeutic procedures.