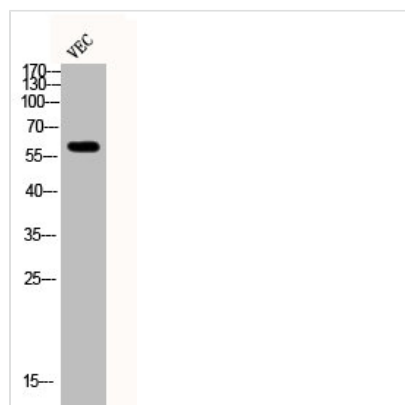




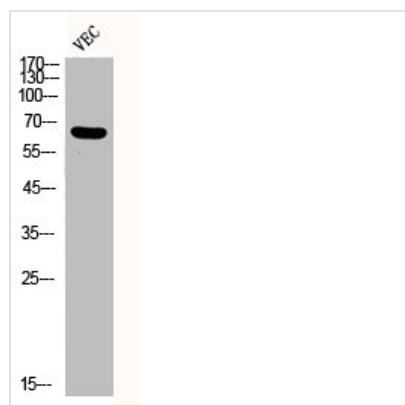
# Phospho-SMAD2/SMAD3 (T8) Antibody

<b>Product Code</b>	CSB-PA000650
<b>Storage</b>	Upon receipt, store at -20°C or -80°C. Avoid repeated freeze.
<b>Uniprot No.</b>	Q15796/P84022
<b>Immunogen</b>	Synthesized peptide derived from Human Smad2/3 around the phosphorylation site of T8.
<b>Raised In</b>	Rabbit
<b>Species Reactivity</b>	Human,Mouse,Rat
<b>Tested Applications</b>	WB, ELISA; WB:1:500-1:2000, ELISA:1:10000
<b>Form</b>	Liquid
<b>Conjugate</b>	Non-conjugated
<b>Storage Buffer</b>	Liquid in PBS containing 50% glycerol, 0.5% BSA and 0.02% sodium azide.
<b>Purification Method</b>	The antibody was affinity-purified from rabbit antiserum by affinity-chromatography using epitope-specific immunogen.
<b>Isotype</b>	IgG
<b>Alias</b>	SMAD2; MADH2; MADR2; Mothers against decapentaplegic homolog 2; MAD homolog 2; Mothers against DPP homolog 2; JV18-1; Mad-related protein 2; hMAD-2; SMAD family member 2; SMAD 2; Smad2; hSMAD2; SMAD3; MADH3; Mothers against decapentaplegic
<b>Immunogen Species</b>	Homo sapiens (Human)
<b>Target Names</b>	SMAD2/SMAD3

## Image



Western Blot analysis of VEC cells using Phospho-Smad2/3 (T8) Polyclonal Antibody



Western Blot analysis of VEC cells using  
Phospho-Smad2/3 (T8) Polyclonal Antibody