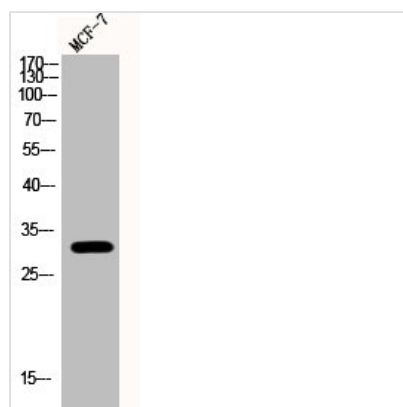




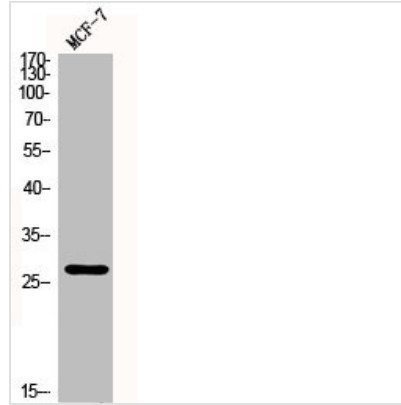
Phospho-RPA2 (S33) Antibody

Product Code	CSB-PA000656
Storage	Upon receipt, store at -20°C or -80°C. Avoid repeated freeze.
Uniprot No.	P15927
Immunogen	Synthesized peptide derived from Human RPA p32 around the phosphorylation site of S33.
Raised In	Rabbit
Species Reactivity	Human,Mouse,Rat
Tested Applications	WB, ELISA; WB:1:500-1:2000, ELISA:1:10000
Form	Liquid
Conjugate	Non-conjugated
Storage Buffer	Liquid in PBS containing 50% glycerol, 0.5% BSA and 0.02% sodium azide.
Purification Method	The antibody was affinity-purified from rabbit antiserum by affinity-chromatography using epitope-specific immunogen.
Isotype	IgG
Alias	RPA2; REPA2; RPA32; RPA34; Replication protein A 32 kDa subunit; RP-A p32; Replication factor A protein 2; RF-A protein 2; Replication protein A 34 kDa subunit; RP-A p34
Immunogen Species	Homo sapiens (Human)
Target Names	RPA2

Image



Western Blot analysis of MCF-7 cells using Phospho-RPA p32 (S33) Polyclonal Antibody



Western Blot analysis of MCF7 cells using Phospho-RPA p32 (S33) Polyclonal Antibody

Usage

For Research Use Only. Not for use in diagnostic or therapeutic procedures.