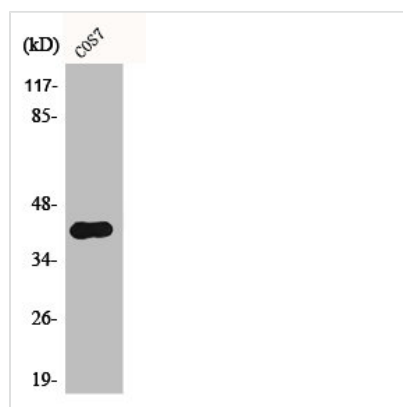




Phospho-CRK (Y221) Antibody

Product Code	CSB-PA000665
Storage	Upon receipt, store at -20°C or -80°C. Avoid repeated freeze.
Uniprot No.	P46108
Immunogen	Synthesized peptide derived from Human Crk II around the phosphorylation site of Y221.
Raised In	Rabbit
Species Reactivity	Human,Mouse,Rat,Monkey
Tested Applications	WB, IF, ELISA; WB:1:500-1:2000, IF:1:200-1:1000, ELISA:1:40000
Form	Liquid
Conjugate	Non-conjugated
Storage Buffer	Liquid in PBS containing 50% glycerol, 0.5% BSA and 0.02% sodium azide.
Purification Method	The antibody was affinity-purified from rabbit antiserum by affinity-chromatography using epitope-specific immunogen.
Isotype	IgG
Alias	CRK; Adapter molecule crk; Proto-oncogene c-Crk; p38
Immunogen Species	Homo sapiens (Human)
Target Names	CRK

Image



Western Blot analysis of COS7 cells using Phospho-Crk II (Y221) Polyclonal Antibody

Usage

For Research Use Only. Not for use in diagnostic or therapeutic procedures.