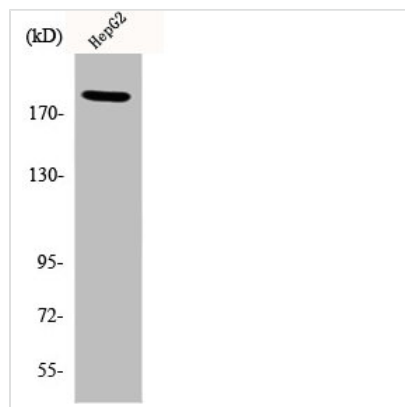




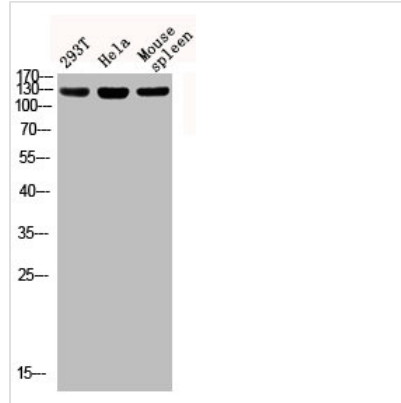
Phospho-IRS1 (S312) Antibody

Product Code	CSB-PA000667
Storage	Upon receipt, store at -20°C or -80°C. Avoid repeated freeze.
Uniprot No.	P35568
Immunogen	Synthesized peptide derived from Human IRS-1 around the phosphorylation site of S312.
Raised In	Rabbit
Species Reactivity	Human,Mouse,Rat
Tested Applications	WB, IF, ELISA; WB:1:500-1:2000, IF:1:200-1:1000, ELISA:1:20000
Form	Liquid
Conjugate	Non-conjugated
Storage Buffer	Liquid in PBS containing 50% glycerol, 0.5% BSA and 0.02% sodium azide.
Purification Method	The antibody was affinity-purified from rabbit antiserum by affinity-chromatography using epitope-specific immunogen.
Isotype	IgG
Alias	IRS1; Insulin receptor substrate 1; IRS-1
Immunogen Species	Homo sapiens (Human)
Target Names	IRS1

Image



Western Blot analysis of HepG2 cells using Phospho-IRS-1 (S312) Polyclonal Antibody



Western blot analysis of 293T HeLa mouse-spleen lysis using Phospho-IRS-1 (S312) antibody.

Usage

For Research Use Only. Not for use in diagnostic or therapeutic procedures.