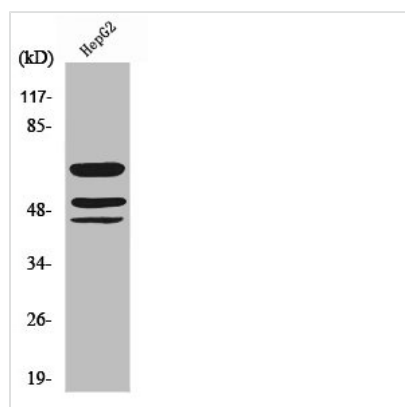




Phospho-SHC1 (Y427) Antibody

Product Code	CSB-PA000671
Storage	Upon receipt, store at -20°C or -80°C. Avoid repeated freeze.
Uniprot No.	P29353
Immunogen	Synthesized peptide derived from Human Shc around the phosphorylation site of Y427.
Raised In	Rabbit
Species Reactivity	Human,Mouse,Rat
Tested Applications	WB, IHC, ELISA; WB:1:500-1:2000, IHC:1:100-1:300, ELISA:1:10000
Form	Liquid
Conjugate	Non-conjugated
Storage Buffer	Liquid in PBS containing 50% glycerol, 0.5% BSA and 0.02% sodium azide.
Purification Method	The antibody was affinity-purified from rabbit antiserum by affinity-chromatography using epitope-specific immunogen.
Isotype	IgG
Alias	SHC1; SHC; SHCA; SHC-transforming protein 1; SHC-transforming protein 3; SHC-transforming protein A; Src homology 2 domain-containing-transforming protein C1; SH2 domain protein C1
Immunogen Species	Homo sapiens (Human)
Target Names	SHC1

Image



Western Blot analysis of HepG2 cells using Phospho-Shc (Y427) Polyclonal Antibody

Usage For Research Use Only. Not for use in diagnostic or therapeutic procedures.