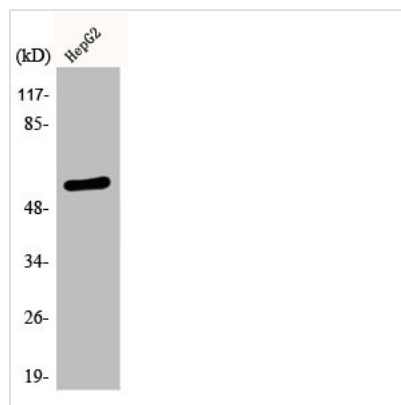




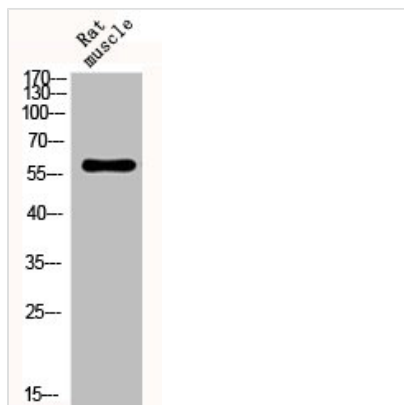
Phospho-SMAD2 (S467) Antibody

Product Code	CSB-PA000675
Storage	Upon receipt, store at -20°C or -80°C. Avoid repeated freeze.
Uniprot No.	Q15796
Immunogen	Synthesized peptide derived from Human Smad2 around the phosphorylation site of S467.
Raised In	Rabbit
Species Reactivity	Human,Mouse,Rat
Tested Applications	WB, IHC, ELISA; WB:1:500-1:2000, IHC:1:100-1:300, ELISA:1:5000
Form	Liquid
Conjugate	Non-conjugated
Storage Buffer	Liquid in PBS containing 50% glycerol, 0.5% BSA and 0.02% sodium azide.
Purification Method	The antibody was affinity-purified from rabbit antiserum by affinity-chromatography using epitope-specific immunogen.
Isotype	IgG
Alias	SMAD2; MADH2; MADR2; Mothers against decapentaplegic homolog 2; MAD homolog 2; Mothers against DPP homolog 2; JV18-1; Mad-related protein 2; hMAD-2; SMAD family member 2; SMAD 2; Smad2; hSMAD2
Immunogen Species	Homo sapiens (Human)
Target Names	SMAD2

Image



Western Blot analysis of HepG2 cells using Phospho-Smad2 (S467) Polyclonal Antibody



Western Blot analysis of RAT-MUSCLE cells using Phospho-Smad2 (S467) Polyclonal Antibody

Usage

For Research Use Only. Not for use in diagnostic or therapeutic procedures.