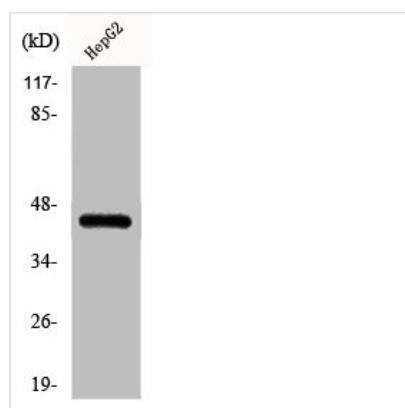




Phospho-CEBPA (S21) Antibody

Product Code	CSB-PA000685
Storage	Upon receipt, store at -20°C or -80°C. Avoid repeated freeze.
Uniprot No.	P49715
Immunogen	Synthesized peptide derived from Human C/EBP α around the phosphorylation site of S21.
Raised In	Rabbit
Species Reactivity	Human, Mouse, Rat
Tested Applications	WB, IHC, ELISA; WB:1:500-1:2000, IHC:1:100-1:300, ELISA:1:5000
Form	Liquid
Conjugate	Non-conjugated
Storage Buffer	Liquid in PBS containing 50% glycerol, 0.5% BSA and 0.02% sodium azide.
Purification Method	The antibody was affinity-purified from rabbit antiserum by affinity-chromatography using epitope-specific immunogen.
Isotype	IgG
Alias	CEBPA; CCAAT/enhancer-binding protein alpha; C/EBP alpha
Immunogen Species	Homo sapiens (Human)
Target Names	CEBPA

Image



Western Blot analysis of HepG2 cells using Phospho-C/EBP α (S21) Polyclonal Antibody

Usage

For Research Use Only. Not for use in diagnostic or therapeutic procedures.