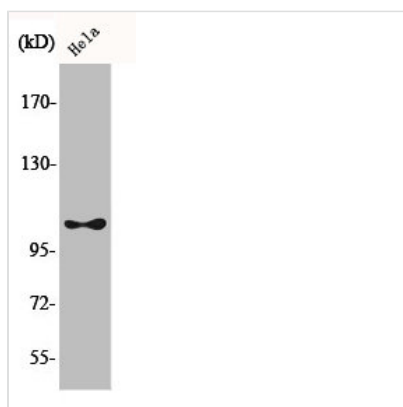




Phospho-EEF2K (S366) Antibody

Product Code	CSB-PA000687
Storage	Upon receipt, store at -20°C or -80°C. Avoid repeated freeze.
Uniprot No.	O00418
Immunogen	Synthesized peptide derived from Human eEF2K around the phosphorylation site of S366.
Raised In	Rabbit
Species Reactivity	Human,Rat
Tested Applications	WB, IHC, ELISA; WB:1:500-1:2000, IHC:1:100-1:300, ELISA:1:40000
Form	Liquid
Conjugate	Non-conjugated
Storage Buffer	Liquid in PBS containing 50% glycerol, 0.5% BSA and 0.02% sodium azide.
Purification Method	The antibody was affinity-purified from rabbit antiserum by affinity-chromatography using epitope-specific immunogen.
Isotype	IgG
Alias	EEF2K; Eukaryotic elongation factor 2 kinase; eEF-2 kinase; eEF-2K; Calcium/calmodulin-dependent eukaryotic elongation factor 2 kinase
Immunogen Species	Homo sapiens (Human)
Target Names	EEF2K

Image



Western Blot analysis of HeLa cells using Phospho-eEF2K (S366) Polyclonal Antibody

Usage For Research Use Only. Not for use in diagnostic or therapeutic procedures.