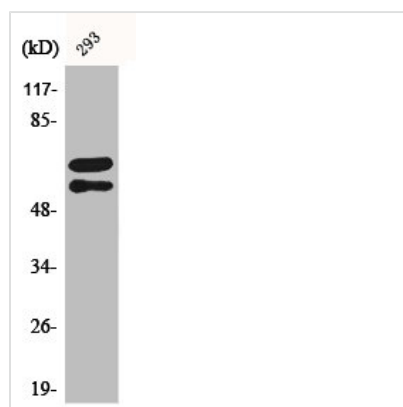




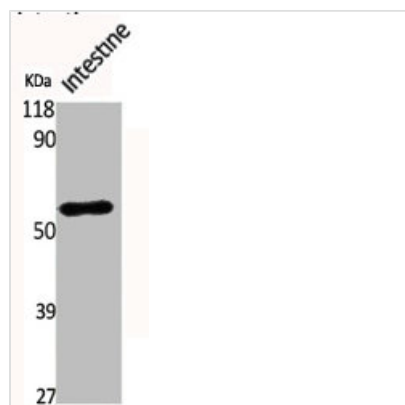
Phospho-LYN (Y508) Antibody

Product Code	CSB-PA000691
Storage	Upon receipt, store at -20°C or -80°C. Avoid repeated freeze.
Uniprot No.	P07948
Immunogen	Synthesized peptide derived from Human Lyn around the phosphorylation site of Y508.
Raised In	Rabbit
Species Reactivity	Human,Mouse,Rat
Tested Applications	WB, IHC, ELISA; WB:1:500-1:2000, IHC:1:100-1:300, ELISA:1:10000
Form	Liquid
Conjugate	Non-conjugated
Storage Buffer	Liquid in PBS containing 50% glycerol, 0.5% BSA and 0.02% sodium azide.
Purification Method	The antibody was affinity-purified from rabbit antiserum by affinity-chromatography using epitope-specific immunogen.
Isotype	IgG
Alias	LYN; JTK8; Tyrosine-protein kinase Lyn; Lck/Yes-related novel protein tyrosine kinase; V-yes-1 Yamaguchi sarcoma viral related oncogene homolog; p53Lyn; p56Lyn
Immunogen Species	Homo sapiens (Human)
Target Names	LYN

Image



Western Blot analysis of 293 cells using Phospho-Lyn (Y508) Polyclonal Antibody



Western Blot analysis of MOUSE-INTESTINE cells using Phospho-Lyn (Y508) Polyclonal Antibody