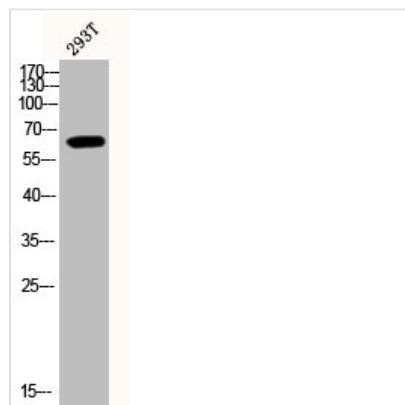




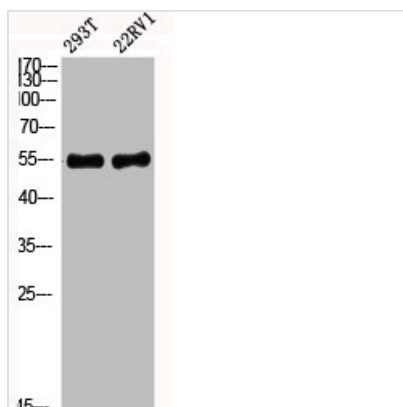
# Phospho-AKT1 (Y474) Antibody

|                            |   |
|----------------------------|---|
| <b>Product Code</b>        | CSB-PA000704  |
| <b>Storage</b>             | Upon receipt, store at -20°C or -80°C. Avoid repeated freeze.   |
| <b>Uniprot No.</b>         | P31749  |
| <b>Immunogen</b>           | Synthesized peptide derived from Human Akt1 around the phosphorylation site of Y474.  |
| <b>Raised In</b>           | Rabbit  |
| <b>Species Reactivity</b>  | Human,Mouse,Rat,Monkey  |
| <b>Tested Applications</b> | WB, IHC, ELISA; WB:1:500-1:2000, IHC:1:100-1:300, ELISA:1:5000  |
| <b>Form</b>                | Liquid  |
| <b>Conjugate</b>           | Non-conjugated  |
| <b>Storage Buffer</b>      | Liquid in PBS containing 50% glycerol, 0.5% BSA and 0.02% sodium azide.   |
| <b>Purification Method</b> | The antibody was affinity-purified from rabbit antiserum by affinity-chromatography using epitope-specific immunogen.                                   |
| <b>Isotype</b>             | IgG   |
| <b>Alias</b>               | AKT1; PKB; RAC; RAC-alpha serine/threonine-protein kinase; Protein kinase B; PKB; Protein kinase B alpha; PKB alpha; Proto-oncogene c-Akt; RAC-PK-alpha |
| <b>Immunogen Species</b>   | Homo sapiens (Human)  |
| <b>Target Names</b>        | AKT1  |

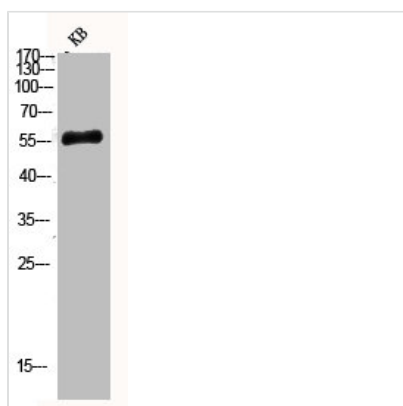
## Image



Western Blot analysis of 293T cells using Phospho-Akt1 (Y474) Polyclonal Antibody



Western Blot analysis of 293T 22RV1 cells using Phospho-Akt1 (Y474) Polyclonal Antibody



Western Blot analysis of KB using Phospho-Akt1 (Y474) Polyclonal Antibody