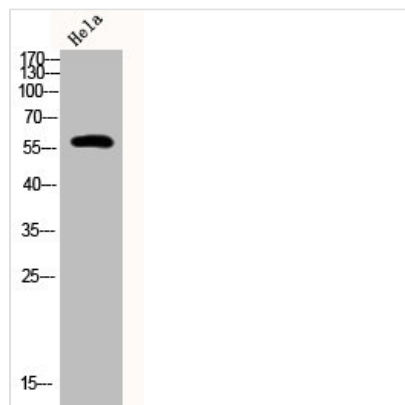




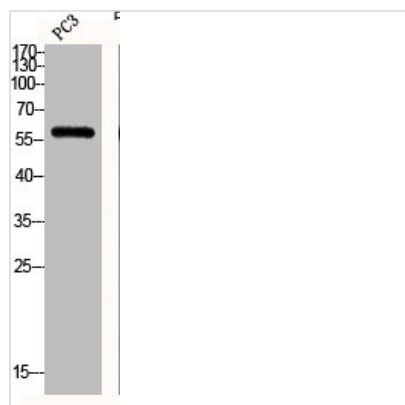
Phospho-PFKFB2 (S483) Antibody

Product Code	CSB-PA000708
Storage	Upon receipt, store at -20°C or -80°C. Avoid repeated freeze.
Uniprot No.	O60825
Immunogen	Synthesized peptide derived from Human PFK-2 car around the phosphorylation site of S483.
Raised In	Rabbit
Species Reactivity	Human,Mouse,Rat
Tested Applications	WB, IHC, ELISA; WB:1:500-1:2000, IHC:1:100-1:300, ELISA:1:40000
Form	Liquid
Conjugate	Non-conjugated
Storage Buffer	Liquid in PBS containing 50% glycerol, 0.5% BSA and 0.02% sodium azide.
Purification Method	The antibody was affinity-purified from rabbit antiserum by affinity-chromatography using epitope-specific immunogen.
Isotype	IgG
Alias	PFKFB2; 6-phosphofructo-2-kinase/fructose-2; 6-bisphosphatase 2; 6PF-2-K/Fru-2,6-P2ase 2; PFK/FBPase 2; 6PF-2-K/Fru-2,6-P2ase heart-type isozyme
Immunogen Species	Homo sapiens (Human)
Target Names	PFKFB2

Image



Western Blot analysis of HeLa cells using Phospho-PFK-2 car (S483) Polyclonal Antibody



Western Blot analysis of PC3 cells using
Phospho-PFK-2 car (S483) Polyclonal Antibody