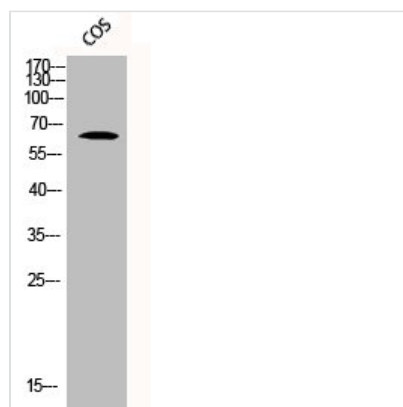




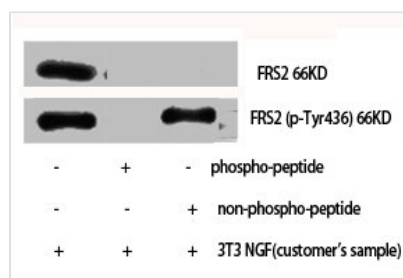
Phospho-FRS2 (Y436) Antibody

Product Code	CSB-PA000714
Storage	Upon receipt, store at -20°C or -80°C. Avoid repeated freeze.
Uniprot No.	Q8WU20
Immunogen	Synthesized peptide derived from Human FRS2 around the phosphorylation site of Y436.
Raised In	Rabbit
Species Reactivity	Human,Mouse,Monkey
Tested Applications	WB, IHC, ELISA; WB:1:500-1:2000, IHC:1:100-1:300, ELISA:1:10000
Form	Liquid
Conjugate	Non-conjugated
Storage Buffer	Liquid in PBS containing 50% glycerol, 0.5% BSA and 0.02% sodium azide.
Purification Method	The antibody was affinity-purified from rabbit antiserum by affinity-chromatography using epitope-specific immunogen.
Isotype	IgG
Alias	FRS2; Fibroblast growth factor receptor substrate 2; FGFR substrate 2; FGFR-signaling adaptor SNT; Suc1-associated neurotrophic factor target 1; SNT-1
Immunogen Species	Homo sapiens (Human)
Target Names	FRS2

Image



Western Blot analysis of COS cells using Phospho-FRS2 (Y436) Polyclonal Antibody



Western Blot analysis of NIH-3T3 cells using Phospho-FRS2 (Y436) Polyclonal Antibody



Usage

For Research Use Only. Not for use in diagnostic or therapeutic procedures.