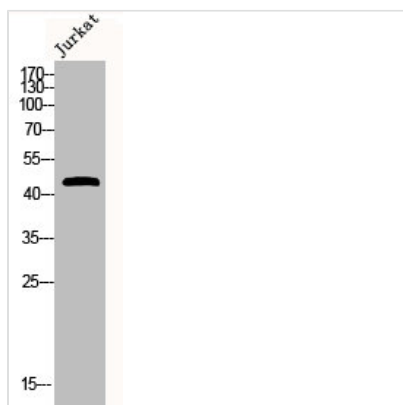




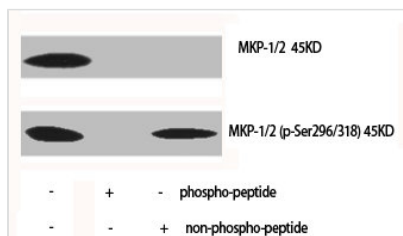
Phospho-DUSP1/DUSP4 (S296/318) Antibody

Product Code	CSB-PA000716
Storage	Upon receipt, store at -20°C or -80°C. Avoid repeated freeze.
Uniprot No.	P28562/Q13115
Immunogen	Synthesized peptide derived from Human MKP-1/2 around the phosphorylation site of S296/318.
Raised In	Rabbit
Species Reactivity	Human, Mouse, Rat
Tested Applications	WB, IHC, ELISA; WB:1:500-1:2000, IHC:1:100-1:300, ELISA:1:5000
Form	Liquid
Conjugate	Non-conjugated
Storage Buffer	Liquid in PBS containing 50% glycerol, 0.5% BSA and 0.02% sodium azide.
Purification Method	The antibody was affinity-purified from rabbit antiserum by affinity-chromatography using epitope-specific immunogen.
Isotype	IgG
Alias	DUSP1; CL100; MKP1; PTPN10; VH1; Dual specificity protein phosphatase 1; Dual specificity protein phosphatase hVH1; Mitogen-activated protein kinase phosphatase 1; MAP kinase phosphatase 1; MKP-1; Protein-tyrosine phosphatase CL100; DUSP4;
Immunogen Species	Homo sapiens (Human)
Target Names	DUSP1/DUSP4

Image



Western Blot analysis of JK cells using Phospho-MKP-1/2 (S296/318) Polyclonal Antibody



Western Blot analysis of various cells using Phospho-MKP-1/2 (S296/318) Polyclonal Antibody



Usage

For Research Use Only. Not for use in diagnostic or therapeutic procedures.