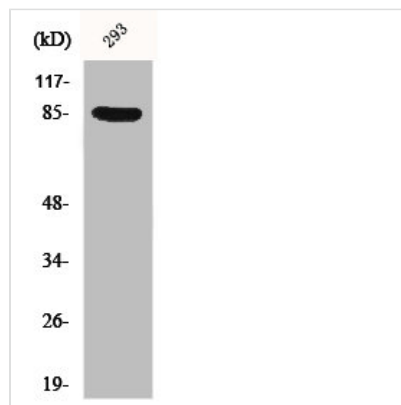




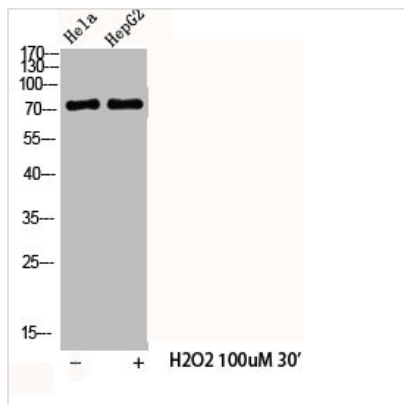
Phospho-CTTN (Y466) Antibody

Product Code	CSB-PA000718
Storage	Upon receipt, store at -20°C or -80°C. Avoid repeated freeze.
Uniprot No.	Q14247
Immunogen	Synthesized peptide derived from Human Cortactin around the phosphorylation site of Y466.
Raised In	Rabbit
Species Reactivity	Human,Mouse,Rat,Monkey
Tested Applications	WB, IHC, IF, ELISA; WB:1:500-1:2000, IHC:1:100-1:300, IF:1:200-1:1000, ELISA:1:20000
Form	Liquid
Conjugate	Non-conjugated
Storage Buffer	Liquid in PBS containing 50% glycerol, 0.5% BSA and 0.02% sodium azide.
Purification Method	The antibody was affinity-purified from rabbit antiserum by affinity-chromatography using epitope-specific immunogen.
Isotype	IgG
Alias	CTTN; EMS1; Src substrate cortactin; Amplexin; Oncogene EMS1
Immunogen Species	Homo sapiens (Human)
Target Names	CTTN

Image



Western Blot analysis of 293 cells using Phospho-Cortactin (Y466) Polyclonal Antibody



Western Blot analysis of HELA HepG2 cells using Phospho-Cortactin (Y466) Polyclonal Antibody

Usage

For Research Use Only. Not for use in diagnostic or therapeutic procedures.