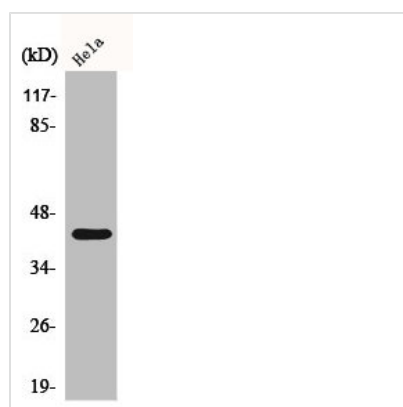




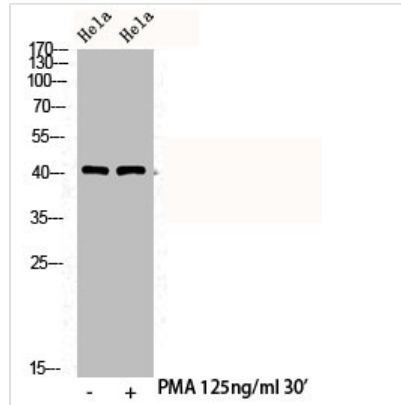
Phospho-CREB1 (S142) Antibody

Product Code	CSB-PA000725
Storage	Upon receipt, store at -20°C or -80°C. Avoid repeated freeze.
Uniprot No.	P16220
Immunogen	Synthesized peptide derived from Human CREB-1 around the phosphorylation site of S142.
Raised In	Rabbit
Species Reactivity	Human,Mouse,Rat
Tested Applications	WB, IHC, IF, ELISA; WB:1:500-1:2000, IHC:1:100-1:300, IF:1:200-1:1000, ELISA:1:40000
Form	Liquid
Conjugate	Non-conjugated
Storage Buffer	Liquid in PBS containing 50% glycerol, 0.5% BSA and 0.02% sodium azide.
Purification Method	The antibody was affinity-purified from rabbit antiserum by affinity-chromatography using epitope-specific immunogen.
Isotype	IgG
Alias	CREB1; Cyclic AMP-responsive element-binding protein 1; CREB-1; cAMP-responsive element-binding protein 1
Immunogen Species	Homo sapiens (Human)
Target Names	CREB1

Image



Western Blot analysis of HeLa cells using Phospho-CREB-1 (S142) Polyclonal Antibody



Western Blot analysis of HELA cells using Phospho-CREB-1 (S142) Polyclonal Antibody

Usage

For Research Use Only. Not for use in diagnostic or therapeutic procedures.