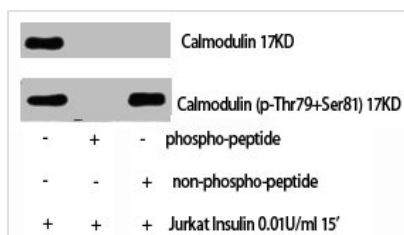




Phospho-CALM1 (T80/S82) Antibody

Product Code	CSB-PA000740
Storage	Upon receipt, store at -20°C or -80°C. Avoid repeated freeze.
Uniprot No.	P62158
Immunogen	Synthesized peptide derived from Human Calmodulin around the phosphorylation site of T80/S82.
Raised In	Rabbit
Species Reactivity	Human, Mouse, Rat
Tested Applications	WB, IHC, IF, ELISA; WB:1:500-1:2000, IHC:1:100-1:300, IF:1:200-1:1000, ELISA:1:5000
Form	Liquid
Conjugate	Non-conjugated
Storage Buffer	Liquid in PBS containing 50% glycerol, 0.5% BSA and 0.02% sodium azide.
Purification Method	The antibody was affinity-purified from rabbit antiserum by affinity-chromatography using epitope-specific immunogen.
Isotype	IgG
Alias	CALM1; CALM; CAM; CAM1; CALM2; CAM2; CAMB; CALM3; CALML2; CAM3; CAMC; CAMIII; Calmodulin; CaM
Immunogen Species	Homo sapiens (Human)
Target Names	CALM1

Image



Western Blot analysis of Jurkat+Insulin cells using Phospho-Calmodulin (T80/S82) Polyclonal Antibody

Usage

For Research Use Only. Not for use in diagnostic or therapeutic procedures.