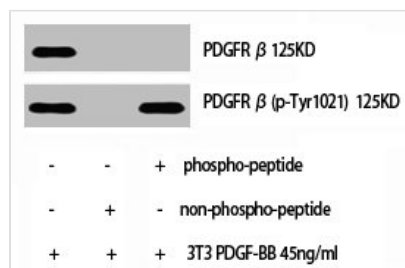




# Phospho-PDGFRB (Y1021) Antibody

<b>Product Code</b>	CSB-PA000745
<b>Storage</b>	Upon receipt, store at -20°C or -80°C. Avoid repeated freeze.
<b>Uniprot No.</b>	P09619
<b>Immunogen</b>	Synthesized peptide derived from Human PDGFR-β around the phosphorylation site of Y1021.
<b>Raised In</b>	Rabbit
<b>Species Reactivity</b>	Human, Mouse, Rat
<b>Tested Applications</b>	WB, IHC, ELISA; IHC:1:100-1:300, ELISA:1:5000
<b>Form</b>	Liquid
<b>Conjugate</b>	Non-conjugated
<b>Storage Buffer</b>	Liquid in PBS containing 50% glycerol, 0.5% BSA and 0.02% sodium azide.
<b>Purification Method</b>	The antibody was affinity-purified from rabbit antiserum by affinity-chromatography using epitope-specific immunogen.
<b>Isotype</b>	IgG
<b>Alias</b>	PDGFRB; PDGFR; PDGFR1; Platelet-derived growth factor receptor beta; PDGF-R-beta; PDGFR-beta; Beta platelet-derived growth factor receptor; Beta-type platelet-derived growth factor receptor; CD140 antigen-like family member B; Platelet-deri
<b>Immunogen Species</b>	Homo sapiens (Human)
<b>Target Names</b>	PDGFRB

## Image



Western Blot analysis of NIH-3T3+PDGF cells using Phospho-PDGFR-β (Y1021) Polyclonal Antibody