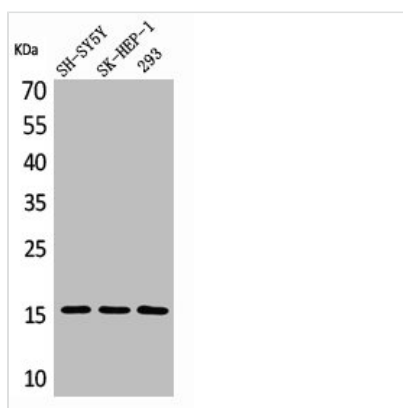




# Phospho-SNCA (Y125) Antibody

<b>Product Code</b>	CSB-PA000748
<b>Storage</b>	Upon receipt, store at -20°C or -80°C. Avoid repeated freeze.
<b>Uniprot No.</b>	P37840
<b>Immunogen</b>	Synthesized peptide derived from Human Synuclein- $\alpha$ around the phosphorylation site of Y125.
<b>Raised In</b>	Rabbit
<b>Species Reactivity</b>	Human, Mouse, Rat
<b>Tested Applications</b>	WB, IHC, ELISA; IHC:1:100-1:300, ELISA:1:20000
<b>Form</b>	Liquid
<b>Conjugate</b>	Non-conjugated
<b>Storage Buffer</b>	Liquid in PBS containing 50% glycerol, 0.5% BSA and 0.02% sodium azide.
<b>Purification Method</b>	The antibody was affinity-purified from rabbit antiserum by affinity-chromatography using epitope-specific immunogen.
<b>Isotype</b>	IgG
<b>Alias</b>	SNCA; NACP; PARK1; Alpha-synuclein; Non-A beta component of AD amyloid; Non-A4 component of amyloid precursor; NACP
<b>Immunogen Species</b>	Homo sapiens (Human)
<b>Target Names</b>	SNCA

## Image



Western Blot analysis of SH-SY5Y 293 SK-HEP-1 cells using Phospho-Synuclein- $\alpha$  (Y125) Polyclonal Antibody

**Usage** For Research Use Only. Not for use in diagnostic or therapeutic procedures.