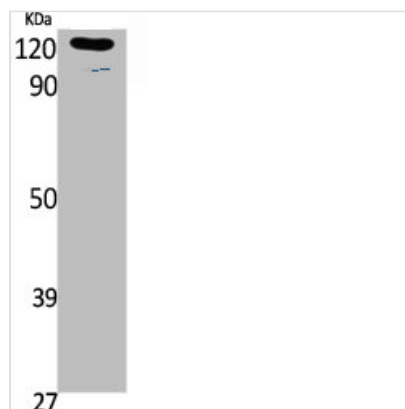




Phospho-LEPR (Y1141) Antibody

Product Code	CSB-PA000752
Storage	Upon receipt, store at -20°C or -80°C. Avoid repeated freeze.
Uniprot No.	P48357
Immunogen	Synthesized peptide derived from Human Ob-R around the phosphorylation site of Y1141.
Raised In	Rabbit
Species Reactivity	Human, Mouse
Tested Applications	WB, ELISA; WB:1:500-1:2000, ELISA:1:5000
Form	Liquid
Conjugate	Non-conjugated
Storage Buffer	Liquid in PBS containing 50% glycerol, 0.5% BSA and 0.02% sodium azide.
Purification Method	The antibody was affinity-purified from rabbit antiserum by affinity-chromatography using epitope-specific immunogen.
Isotype	IgG
Alias	LEPR; DB; OBR; Leptin receptor; LEP-R; HuB219; OB receptor; OB-R; CD antigen CD295
Immunogen Species	Homo sapiens (Human)
Target Names	LEPR

Image



Western Blot analysis of K562, cells using Phospho-Ob-R (Y1141) Polyclonal Antibody

Usage For Research Use Only. Not for use in diagnostic or therapeutic procedures.