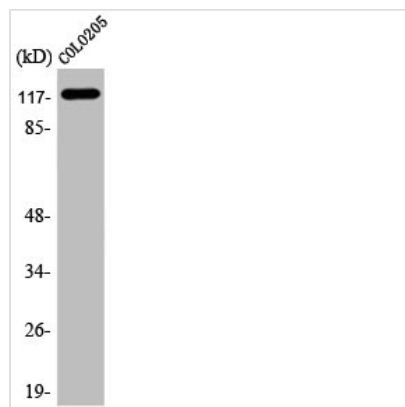




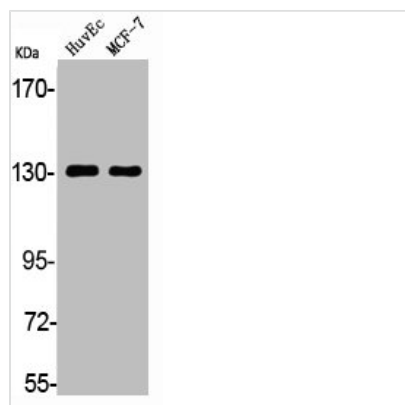
ADCY1 Antibody

Product Code	CSB-PA000773
Storage	Upon receipt, store at -20°C or -80°C. Avoid repeated freeze.
Uniprot No.	Q08828
Immunogen	Synthesized peptide derived from the Internal region of Human A Cyclase I.
Raised In	Rabbit
Species Reactivity	Human,Mouse
Tested Applications	WB, IHC, ELISA; WB:1:500-1:2000, IHC:1:100-1:300, ELISA:1:40000
Form	Liquid
Conjugate	Non-conjugated
Storage Buffer	Liquid in PBS containing 50% glycerol, 0.5% BSA and 0.02% sodium azide.
Purification Method	The antibody was affinity-purified from rabbit antiserum by affinity-chromatography using epitope-specific immunogen.
Isotype	IgG
Alias	ADCY1; Adenylate cyclase type 1; ATP pyrophosphate-lyase 1; Adenylate cyclase type I; Adenylyl cyclase 1; Ca(2+)/calmodulin-activated adenylyl cyclase
Immunogen Species	Homo sapiens (Human)
Target Names	ADCY1

Image



Western Blot analysis of COLO205 cells using A Cyclase I Polyclonal Antibody



Western Blot analysis of HuvEc MCF7 cells
using A Cyclase I Polyclonal Antibody