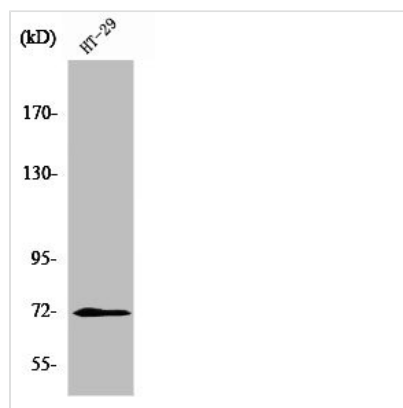




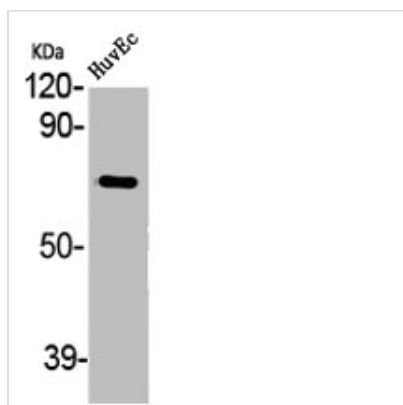
ABCG2 Antibody

Product Code	CSB-PA000788
Storage	Upon receipt, store at -20°C or -80°C. Avoid repeated freeze.
Uniprot No.	Q9UNQ0
Immunogen	Synthesized peptide derived from the Internal region of Human ABCG2.
Raised In	Rabbit
Species Reactivity	Human
Tested Applications	WB, IHC, ELISA; WB:1:500-1:2000, IHC:1:100-1:300, ELISA:1:10000
Form	Liquid
Conjugate	Non-conjugated
Storage Buffer	Liquid in PBS containing 50% glycerol, 0.5% BSA and 0.02% sodium azide.
Purification Method	The antibody was affinity-purified from rabbit antiserum by affinity-chromatography using epitope-specific immunogen.
Isotype	IgG
Alias	ABCG2; ABCP; BCRP; BCRP1; MXR; ATP-binding cassette sub-family G member 2; Breast cancer resistance protein; CDw338; Mitoxantrone resistance-associated protein; Placenta-specific ATP-binding cassette transporter; CD antigen CD338
Immunogen Species	Homo sapiens (Human)
Target Names	ABCG2

Image



Western Blot analysis of HT29 cells using ABCG2 Polyclonal Antibody



Western Blot analysis of HuvEc cells using ABCG2 Polyclonal Antibody