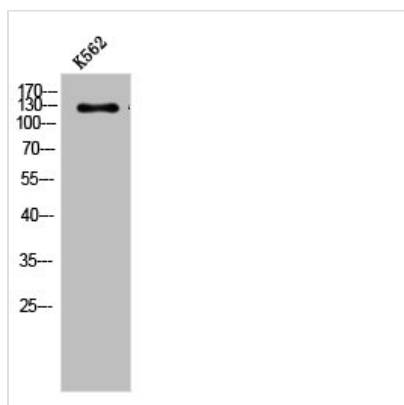




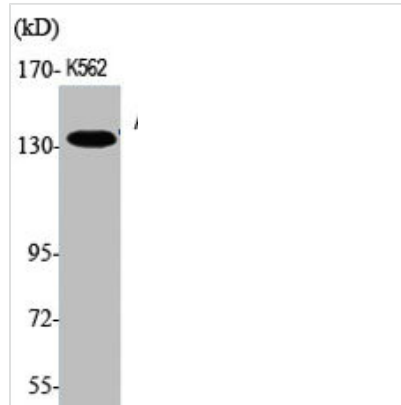
ABL1/ABL2 Antibody

Product Code	CSB-PA000795
Storage	Upon receipt, store at -20°C or -80°C. Avoid repeated freeze.
Uniprot No.	P00519/P42684
Immunogen	Synthesized peptide derived from Human Abl1/2 around the non-phosphorylation site of Y393/439.
Raised In	Rabbit
Species Reactivity	Human, Mouse
Tested Applications	WB, IHC, ELISA; WB:1:500-1:2000, IHC:1:100-1:300, ELISA:1:20000
Form	Liquid
Conjugate	Non-conjugated
Storage Buffer	Liquid in PBS containing 50% glycerol, 0.5% BSA and 0.02% sodium azide.
Purification Method	The antibody was affinity-purified from rabbit antiserum by affinity-chromatography using epitope-specific immunogen.
Isotype	IgG
Alias	ABL1; ABL; JTK7; Tyrosine-protein kinase ABL1; Abelson murine leukemia viral oncogene homolog 1; Abelson tyrosine-protein kinase 1; Proto-oncogene c-Abl; p150; ABL2; ABLL; ARG; Abelson tyrosine-protein kinase 2; Abelson murine leukemia vira
Immunogen Species	Homo sapiens (Human)
Target Names	ABL1/ABL2

Image



Western Blot analysis of K562 cells using Abl1/2 Polyclonal Antibody



Western Blot analysis of K562 cells using Abl1/2 Polyclonal Antibody

Usage

For Research Use Only. Not for use in diagnostic or therapeutic procedures.