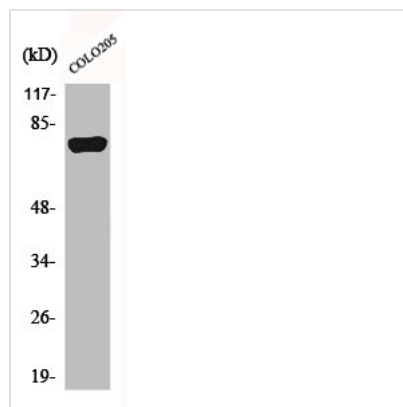




ACSL6 Antibody

Product Code	CSB-PA000807
Storage	Upon receipt, store at -20°C or -80°C. Avoid repeated freeze.
Uniprot No.	Q9UKU0
Immunogen	Synthesized peptide derived from the Internal region of Human ACSL6.
Raised In	Rabbit
Species Reactivity	Human,Mouse,Rat
Tested Applications	WB, IHC, ELISA; WB:1:500-1:2000, IHC:1:100-1:300, ELISA:1:40000
Form	Liquid
Conjugate	Non-conjugated
Storage Buffer	Liquid in PBS containing 50% glycerol, 0.5% BSA and 0.02% sodium azide.
Purification Method	The antibody was affinity-purified from rabbit antiserum by affinity-chromatography using epitope-specific immunogen.
Isotype	IgG
Alias	ACSL6; ACS2; FAFL6; KIAA0837; LACS5; Long-chain-fatty-acid--CoA ligase 6; Long-chain acyl-CoA synthetase 6; LACS 6
Immunogen Species	Homo sapiens (Human)
Target Names	ACSL6

Image



Western Blot analysis of Jurkat cells using ACSL6 Polyclonal Antibody

Usage

For Research Use Only. Not for use in diagnostic or therapeutic procedures.