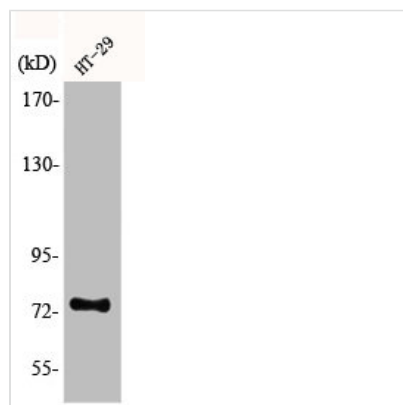




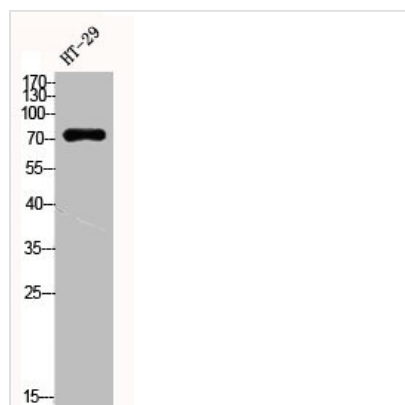
ACSS1 Antibody

Product Code	CSB-PA000808
Storage	Upon receipt, store at -20°C or -80°C. Avoid repeated freeze.
Uniprot No.	Q9NUB1
Immunogen	Synthesized peptide derived from the C-terminal region of Human ACSS1.
Raised In	Rabbit
Species Reactivity	Human, Mouse
Tested Applications	WB, IHC, ELISA; WB:1:500-1:2000, IHC:1:100-1:300, ELISA:1:40000
Form	Liquid
Conjugate	Non-conjugated
Storage Buffer	Liquid in PBS containing 50% glycerol, 0.5% BSA and 0.02% sodium azide.
Purification Method	The antibody was affinity-purified from rabbit antiserum by affinity-chromatography using epitope-specific immunogen.
Isotype	IgG
Alias	ACSS1; ACAS2L; KIAA1846; Acetyl-coenzyme A synthetase 2-like; mitochondrial; Acetate--CoA ligase 2; Acetyl-CoA synthetase 2; AceCS2; Acyl-CoA synthetase short-chain family member 1
Immunogen Species	Homo sapiens (Human)
Target Names	ACSS1

Image



Western Blot analysis of HT29 cells using ACSS1 Polyclonal Antibody



Western Blot analysis of HT29 cells using
ACSS1 Polyclonal Antibody