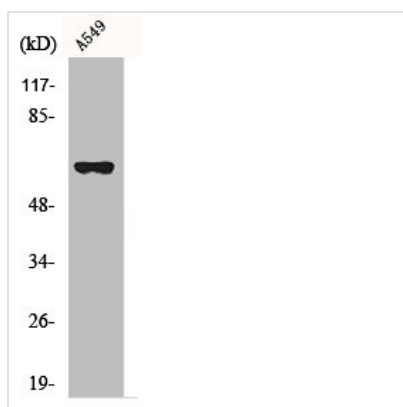




ADCK1 Antibody

Product Code	CSB-PA000822
Storage	Upon receipt, store at -20°C or -80°C. Avoid repeated freeze.
Uniprot No.	Q86TW2
Immunogen	Synthesized peptide derived from the Internal region of Human ADCK1.
Raised In	Rabbit
Species Reactivity	Human, Mouse
Tested Applications	WB, IHC, IF, ELISA; WB:1:500-1:2000, IHC:1:100-1:300, IF:1:200-1:1000, ELISA:1:5000
Form	Liquid
Conjugate	Non-conjugated
Storage Buffer	Liquid in PBS containing 50% glycerol, 0.5% BSA and 0.02% sodium azide.
Purification Method	The antibody was affinity-purified from rabbit antiserum by affinity-chromatography using epitope-specific immunogen.
Isotype	IgG
Alias	ADCK1; Uncharacterized aarF domain-containing protein kinase 1
Immunogen Species	Homo sapiens (Human)
Target Names	ADCK1

Image



Western Blot analysis of RAW264.7 cells using ADCK1 Polyclonal Antibody

Usage

For Research Use Only. Not for use in diagnostic or therapeutic procedures.