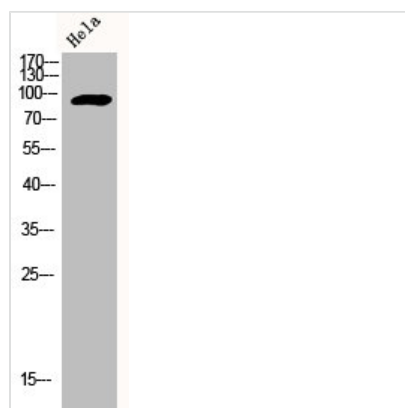




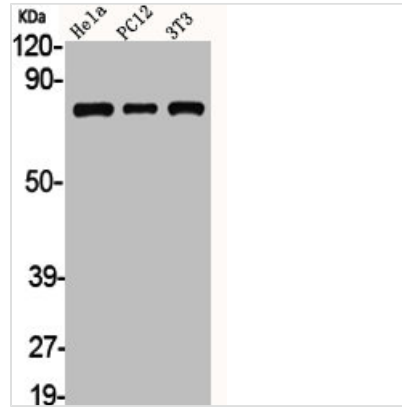
ADD1/ADD2 Antibody

Product Code	CSB-PA000825
Storage	Upon receipt, store at -20°C or -80°C. Avoid repeated freeze.
Uniprot No.	P35611/P35612
Immunogen	Synthesized peptide derived from Human Adducin α/β around the non-phosphorylation site of S726/713.
Raised In	Rabbit
Species Reactivity	Human, Mouse, Rat
Tested Applications	WB, IHC, IP, IF, ELISA; WB:1:500-1:2000, IHC:1:100-1:300, IP:2-5ug, IF:1:200-1:1000, ELISA:1:40000
Form	Liquid
Conjugate	Non-conjugated
Storage Buffer	Liquid in PBS containing 50% glycerol, 0.5% BSA and 0.02% sodium azide.
Purification Method	The antibody was affinity-purified from rabbit antiserum by affinity-chromatography using epitope-specific immunogen.
Isotype	IgG
Alias	ADD1; ADDA; Alpha-adducin; Erythrocyte adducin subunit alpha; ADD2; ADDB; Beta-adducin; Erythrocyte adducin subunit beta
Immunogen Species	Homo sapiens (Human)
Target Names	ADD1/ADD2

Image



Western Blot analysis of HELA cells using Adducin α/β Polyclonal Antibody



Western Blot analysis of HELA PC12 NIH-3T3 cells using Adducin α/β Polyclonal Antibody

Usage

For Research Use Only. Not for use in diagnostic or therapeutic procedures.