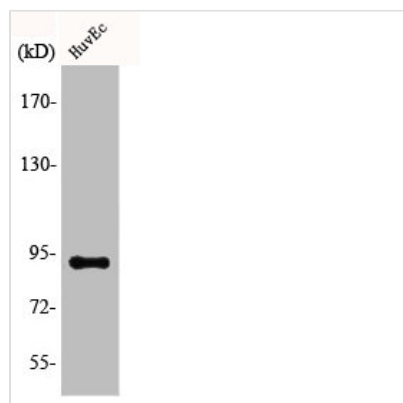




AKAP1 Antibody

| | |
|----------------------------|--|
| Product Code | CSB-PA000842 |
| Storage | Upon receipt, store at -20°C or -80°C. Avoid repeated freeze. |
| Uniprot No. | Q92667 |
| Immunogen | Synthesized peptide derived from the Internal region of Human AKAP 149. |
| Raised In | Rabbit |
| Species Reactivity | Human |
| Tested Applications | WB, IHC, IF, ELISA; WB:1:500-1:2000, IHC:1:100-1:300, IF:1:200-1:1000, ELISA:1:5000 |
| Form | Liquid |
| Conjugate | Non-conjugated |
| Storage Buffer | Liquid in PBS containing 50% glycerol, 0.5% BSA and 0.02% sodium azide. |
| Purification Method | The antibody was affinity-purified from rabbit antiserum by affinity-chromatography using epitope-specific immunogen. |
| Isotype | IgG |
| Alias | AKAP1; AKAP149; PRKA1; A-kinase anchor protein 1; mitochondrial; A-kinase anchor protein 149 kDa; AKAP 149; Dual specificity A-kinase-anchoring protein 1; D-AKAP-1; Protein kinase A-anchoring protein 1; PRKA1; Spermatid A-kinase anchor prot |
| Immunogen Species | Homo sapiens (Human) |
| Target Names | AKAP1 |

Image



Western Blot analysis of COLO205 cells using AKAP 149 Polyclonal Antibody

Usage

For Research Use Only. Not for use in diagnostic or therapeutic procedures.