



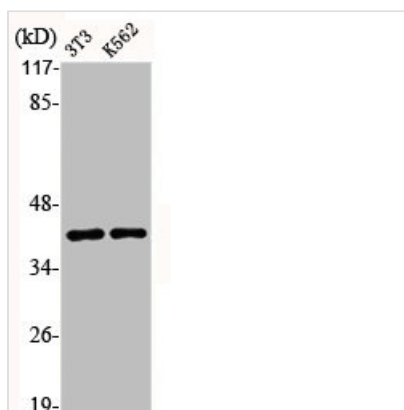
ALDOA Antibody

Product Code	CSB-PA000862
Storage	Upon receipt, store at -20°C or -80°C. Avoid repeated freeze.
Uniprot No.	P04075
Immunogen	Synthesized peptide derived from the N-terminal region of Human Aldolase A.
Raised In	Rabbit
Species Reactivity	Human,Mouse,Rat
Tested Applications	WB, IF, ELISA; WB:1:500-1:2000, IF:1:200-1:1000, ELISA:1:10000
Form	Liquid
Conjugate	Non-conjugated
Storage Buffer	Liquid in PBS containing 50% glycerol, 0.5% BSA and 0.02% sodium azide.
Purification Method	The antibody was affinity-purified from rabbit antiserum by affinity-chromatography using epitope-specific immunogen.
Isotype	IgG
Alias	ALDA antibody; Aldo1 antibody; ALDOA antibody; ALDOA_HUMAN antibody; Aldolase 1 antibody; Aldolase A antibody; Aldolase A fructose bisphosphatase antibody; Aldolase A fructose bisphosphate antibody; Aldolase; fructose-bisphosphate A antibody; Epididymis secretory sperm binding protein Li 87p antibody; FRUCTOALDOLASE A antibody; Fructose 1 6 bisphosphate triosephosphate lyase antibody; Fructose bisphosphate aldolase A antibody; Fructose bisphosphate aldolase antibody; FRUCTOSE-1,6-BISPHOSPHATE ALDOLASE A antibody; Fructose-bisphosphate aldolase A antibody; Fructose-bisphosphate aldolase A Muscle-type antibody; GSD12 antibody; HEL S 87p antibody; Lung cancer antigen NY LU 1 antibody; Lung cancer antigen NY-LU-1 antibody; MGC10942 antibody; MGC17716 antibody; MGC17767 antibody; Muscle type aldolase antibody; Muscle-type aldolase antibody; RNALDOG5 antibody
Immunogen Species	Homo sapiens (Human)
Target Names	ALDOA

Image



Western Blot analysis of COLO205 cells using Aldolase A Polyclonal Antibody



Western Blot analysis of NIH-3T3 K562 cells using Aldolase A Polyclonal Antibody

Usage

For Research Use Only. Not for use in diagnostic or therapeutic procedures.