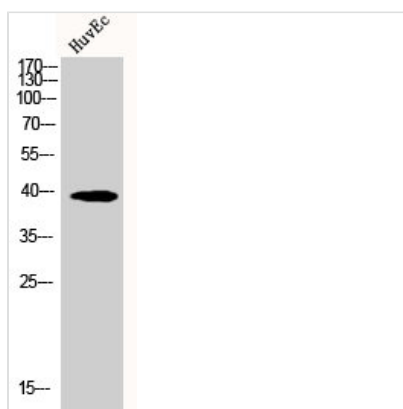




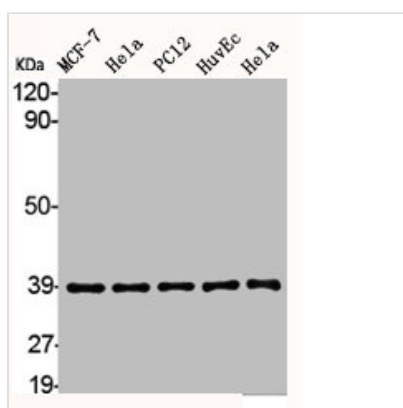
ALDOB Antibody

Product Code	CSB-PA000863
Storage	Upon receipt, store at -20°C or -80°C. Avoid repeated freeze.
Uniprot No.	P05062
Immunogen	Synthesized peptide derived from the Internal region of Human Aldolase B.
Raised In	Rabbit
Species Reactivity	Human,Mouse,Rat
Tested Applications	WB, IHC, ELISA; WB:1:500-1:2000, IHC:1:100-1:300, ELISA:1:20000
Form	Liquid
Conjugate	Non-conjugated
Storage Buffer	Liquid in PBS containing 50% glycerol, 0.5% BSA and 0.02% sodium azide.
Purification Method	The antibody was affinity-purified from rabbit antiserum by affinity-chromatography using epitope-specific immunogen.
Isotype	IgG
Alias	ALDOB; ALDB; Fructose-bisphosphate aldolase B; Liver-type aldolase
Immunogen Species	Homo sapiens (Human)
Target Names	ALDOB

Image



Western Blot analysis of HuvEc cells using Aldolase B Polyclonal Antibody



Western Blot analysis of HuvEc MCF7 HELA PC12 cells using Aldolase B Polyclonal Antibody



Usage

For Research Use Only. Not for use in diagnostic or therapeutic procedures.