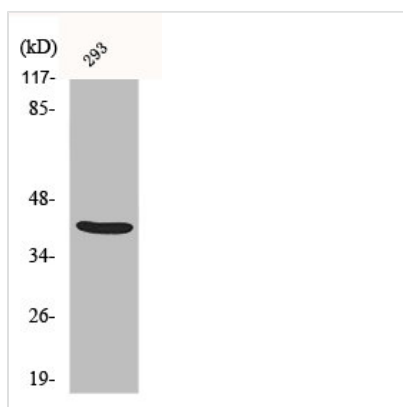




ALX3 Antibody

Product Code	CSB-PA000867
Storage	Upon receipt, store at -20°C or -80°C. Avoid repeated freeze.
Uniprot No.	O95076
Immunogen	Synthesized peptide derived from the Internal region of Human ALX3.
Raised In	Rabbit
Species Reactivity	Human, Mouse, Rat
Tested Applications	WB, IHC, IF, ELISA; WB:1:500-1:2000, IHC:1:100-1:300, IF:1:200-1:1000, ELISA:1:20000
Form	Liquid
Conjugate	Non-conjugated
Storage Buffer	Liquid in PBS containing 50% glycerol, 0.5% BSA and 0.02% sodium azide.
Purification Method	The antibody was affinity-purified from rabbit antiserum by affinity-chromatography using epitope-specific immunogen.
Isotype	IgG
Alias	ALX3; Homeobox protein aristaless-like 3; Proline-rich transcription factor ALX3
Immunogen Species	Homo sapiens (Human)
Target Names	ALX3

Image



Western Blot analysis of 293 cells using ALX3 Polyclonal Antibody

Usage

For Research Use Only. Not for use in diagnostic or therapeutic procedures.