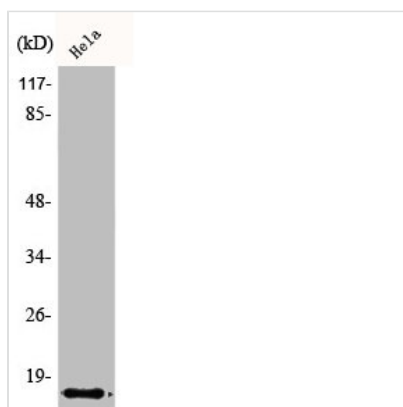




IAPP Antibody

Product Code	CSB-PA000874
Storage	Upon receipt, store at -20°C or -80°C. Avoid repeated freeze.
Uniprot No.	P10997
Immunogen	Synthesized peptide derived from the N-terminal region of Human Amylin.
Raised In	Rabbit
Species Reactivity	Human
Tested Applications	WB, IHC, IF, ELISA; WB:1:500-1:2000, IHC:1:100-1:300, IF:1:200-1:1000, ELISA:1:10000
Form	Liquid
Conjugate	Non-conjugated
Storage Buffer	Liquid in PBS containing 50% glycerol, 0.5% BSA and 0.02% sodium azide.
Purification Method	The antibody was affinity-purified from rabbit antiserum by affinity-chromatography using epitope-specific immunogen.
Isotype	IgG
Alias	IAPP; Islet amyloid polypeptide; Amylin; Diabetes-associated peptide; DAP; Insulinoma amyloid peptide
Immunogen Species	Homo sapiens (Human)
Target Names	IAPP

Image



Western Blot analysis of HeLa cells using Amylin Polyclonal Antibody

Usage For Research Use Only. Not for use in diagnostic or therapeutic procedures.