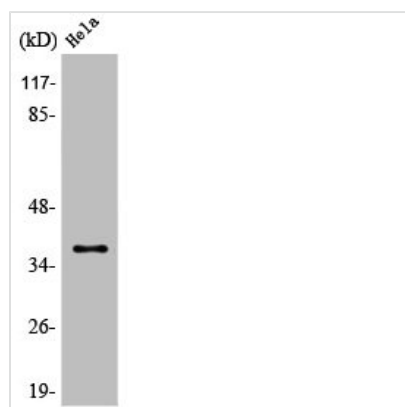




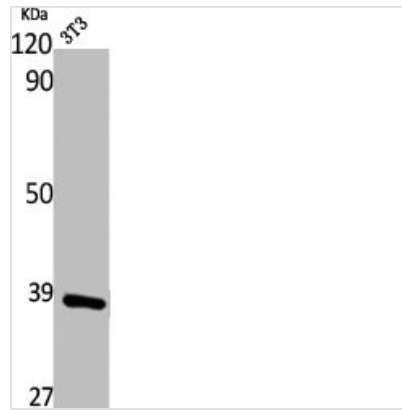
ANXA1 Antibody

Product Code	CSB-PA000878
Storage	Upon receipt, store at -20°C or -80°C. Avoid repeated freeze.
Uniprot No.	P04083
Immunogen	Synthesized peptide derived from the Internal region of Human Annexin I.
Raised In	Rabbit
Species Reactivity	Human, Mouse, Rat
Tested Applications	WB, IHC, ELISA; WB:1:500-1:2000, IHC:1:100-1:300, IHC:1:200-1:1000, ELISA:1:5000
Form	Liquid
Conjugate	Non-conjugated
Storage Buffer	Liquid in PBS containing 50% glycerol, 0.5% BSA and 0.02% sodium azide.
Purification Method	The antibody was affinity-purified from rabbit antiserum by affinity-chromatography using epitope-specific immunogen.
Isotype	IgG
Alias	ANXA1; ANX1; LPC1; Annexin A1; Annexin I; Annexin-1; Calpactin II; Calpactin-2; Chromobindin-9; Lipocortin I; Phospholipase A2 inhibitory protein; p35
Immunogen Species	Homo sapiens (Human)
Target Names	ANXA1

Image



Western Blot analysis of HeLa cells using Annexin I Polyclonal Antibody



Western Blot analysis of NIH-3T3 cells using Annexin I Polyclonal Antibody

Usage

For Research Use Only. Not for use in diagnostic or therapeutic procedures.