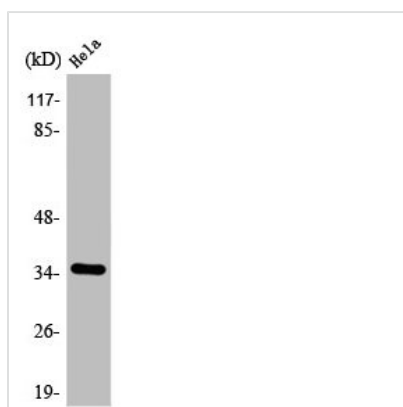




SLC25A31 Antibody

Product Code	CSB-PA000884
Storage	Upon receipt, store at -20°C or -80°C. Avoid repeated freeze.
Uniprot No.	Q9H0C2
Immunogen	Synthesized peptide derived from the Internal region of Human ANT4.
Raised In	Rabbit
Species Reactivity	Human, Mouse
Tested Applications	WB, IHC, IF, ELISA; WB:1:500-1:2000, IHC:1:100-1:300, IF:1:200-1:1000, ELISA:1:40000
Form	Liquid
Conjugate	Non-conjugated
Storage Buffer	Liquid in PBS containing 50% glycerol, 0.5% BSA and 0.02% sodium azide.
Purification Method	The antibody was affinity-purified from rabbit antiserum by affinity-chromatography using epitope-specific immunogen.
Isotype	IgG
Alias	SLC25A31; AAC4; ANT4; SFEC; ADP/ATP translocase 4; ADP; ATP carrier protein 4; Adenine nucleotide translocator 4; ANT 4; Solute carrier family 25 member 31; Sperm flagellar energy carrier protein
Immunogen Species	Homo sapiens (Human)
Target Names	SLC25A31

Image



Western Blot analysis of COLO205 cells using ANT4 Polyclonal Antibody