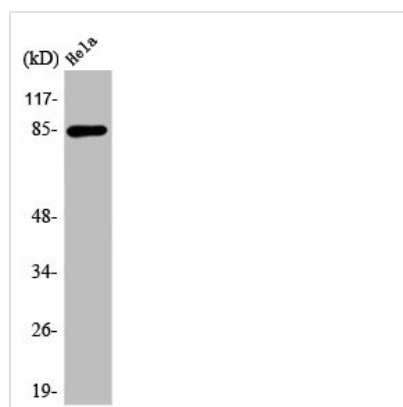




ANAPC5 Antibody

| | |
|----------------------------|---|
| Product Code | CSB-PA000899 |
| Storage | Upon receipt, store at -20°C or -80°C. Avoid repeated freeze. |
| Uniprot No. | Q9UJX4 |
| Immunogen | Synthesized peptide derived from the Internal region of Human APC5. |
| Raised In | Rabbit |
| Species Reactivity | Human |
| Tested Applications | WB, ELISA; WB:1:500-1:2000, ELISA:1:5000 |
| Form | Liquid |
| Conjugate | Non-conjugated |
| Storage Buffer | Liquid in PBS containing 50% glycerol, 0.5% BSA and 0.02% sodium azide. |
| Purification Method | The antibody was affinity-purified from rabbit antiserum by affinity-chromatography using epitope-specific immunogen. |
| Isotype | IgG |
| Alias | ANAPC5; APC5; Anaphase-promoting complex subunit 5; APC5; Cyclosome subunit 5 |
| Immunogen Species | Homo sapiens (Human) |
| Target Names | ANAPC5 |

Image



Western Blot analysis of COLO205 cells using APC5 Polyclonal Antibody

Usage

For Research Use Only. Not for use in diagnostic or therapeutic procedures.