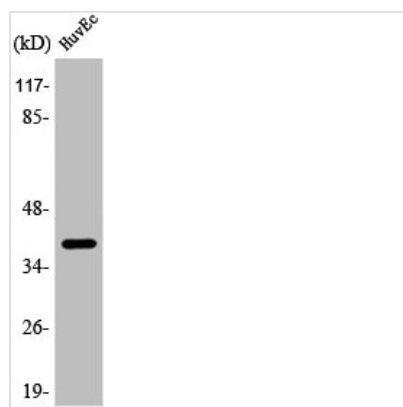




APOL2 Antibody

Product Code	CSB-PA000907
Storage	Upon receipt, store at -20°C or -80°C. Avoid repeated freeze.
Uniprot No.	Q9BQE5
Immunogen	Synthesized peptide derived from the Internal region of Human ApoL2.
Raised In	Rabbit
Species Reactivity	Human
Tested Applications	WB, IHC, IF, ELISA; WB:1:500-1:2000, IHC:1:100-1:300, IF:1:200-1:1000, ELISA:1:40000
Form	Liquid
Conjugate	Non-conjugated
Storage Buffer	Liquid in PBS containing 50% glycerol, 0.5% BSA and 0.02% sodium azide.
Purification Method	The antibody was affinity-purified from rabbit antiserum by affinity-chromatography using epitope-specific immunogen.
Isotype	IgG
Alias	APOL2; Apolipoprotein L2; Apolipoprotein L-II; ApoL-II
Immunogen Species	Homo sapiens (Human)
Target Names	APOL2

Image



Western Blot analysis of COLO205 cells using ApoL2 Polyclonal Antibody

Usage

For Research Use Only. Not for use in diagnostic or therapeutic procedures.