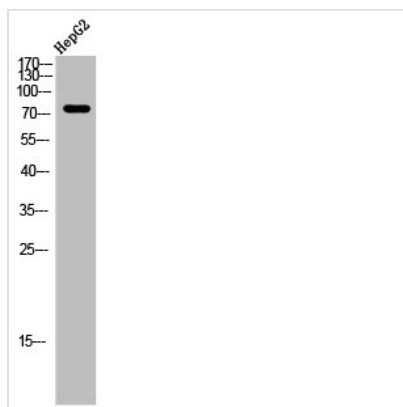




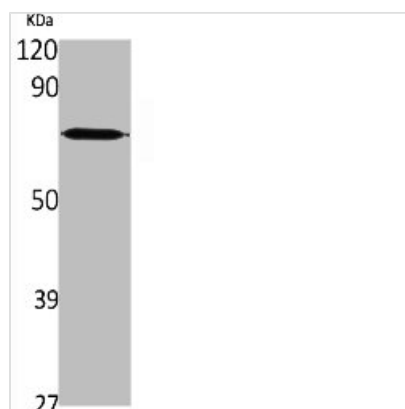
SLC25A12 Antibody

Product Code	CSB-PA000919
Storage	Upon receipt, store at -20°C or -80°C. Avoid repeated freeze.
Uniprot No.	O75746
Immunogen	Synthesized peptide derived from the Internal region of Human ARALAR.
Raised In	Rabbit
Species Reactivity	Human
Tested Applications	WB, IHC, ELISA; WB:1:500-1:2000, IHC:1:100-1:300, ELISA:1:20000
Form	Liquid
Conjugate	Non-conjugated
Storage Buffer	Liquid in PBS containing 50% glycerol, 0.5% BSA and 0.02% sodium azide.
Purification Method	The antibody was affinity-purified from rabbit antiserum by affinity-chromatography using epitope-specific immunogen.
Isotype	IgG
Alias	SLC25A12; ARALAR1; Calcium-binding mitochondrial carrier protein Aralar1; Mitochondrial aspartate glutamate carrier 1; Solute carrier family 25 member 12
Immunogen Species	Homo sapiens (Human)
Target Names	SLC25A12

Image



Western Blot analysis of HEPG2 cells using ARALAR Polyclonal Antibody



Western Blot analysis of various cells using
ARALAR Polyclonal Antibody