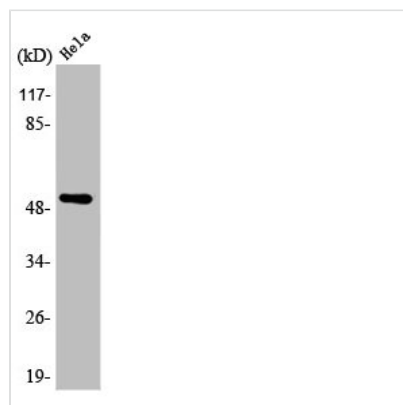




ARMC6 Antibody

Product Code	CSB-PA000928
Storage	Upon receipt, store at -20°C or -80°C. Avoid repeated freeze.
Uniprot No.	Q6NXE6
Immunogen	Synthesized peptide derived from the C-terminal region of Human ARMC6.
Raised In	Rabbit
Species Reactivity	Human,Mouse,Rat
Tested Applications	WB, IF, ELISA; WB:1:500-1:2000, IF:1:200-1:1000, ELISA:1:40000
Form	Liquid
Conjugate	Non-conjugated
Storage Buffer	Liquid in PBS containing 50% glycerol, 0.5% BSA and 0.02% sodium azide.
Purification Method	The antibody was affinity-purified from rabbit antiserum by affinity-chromatography using epitope-specific immunogen.
Isotype	IgG
Alias	ARMC6; Armadillo repeat-containing protein 6
Immunogen Species	Homo sapiens (Human)
Target Names	ARMC6

Image



Western Blot analysis of HT29 cells using ARMC6 Polyclonal Antibody