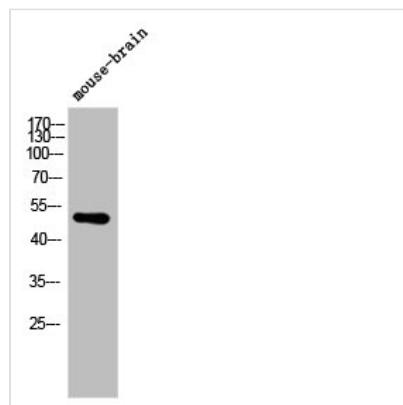




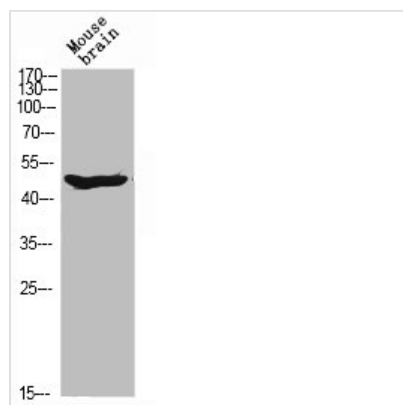
ARMCX1 Antibody

| | |
|----------------------------|---|
| Product Code | CSB-PA000929 |
| Storage | Upon receipt, store at -20°C or -80°C. Avoid repeated freeze. |
| Uniprot No. | Q9P291 |
| Immunogen | Synthesized peptide derived from the N-terminal region of Human ARMCX1. |
| Raised In | Rabbit |
| Species Reactivity | Human |
| Tested Applications | WB, IHC, IF, ELISA; WB:1:500-1:2000, IHC:1:100-1:300, IF:1:200-1:1000, ELISA:1:20000 |
| Form | Liquid |
| Conjugate | Non-conjugated |
| Storage Buffer | Liquid in PBS containing 50% glycerol, 0.5% BSA and 0.02% sodium azide. |
| Purification Method | The antibody was affinity-purified from rabbit antiserum by affinity-chromatography using epitope-specific immunogen. |
| Isotype | IgG |
| Alias | ARMCX1; ALEX1; AD032; Armadillo repeat-containing X-linked protein 1; ARM protein lost in epithelial cancers on chromosome X 1; Protein ALEX1 |
| Immunogen Species | Homo sapiens (Human) |
| Target Names | ARMCX1 |

Image



Western Blot analysis of mouse-brain cells using ARMCX1 Polyclonal Antibody



Western Blot analysis of MOUSE-BRAIN cells
using ARMCX1 Polyclonal Antibody