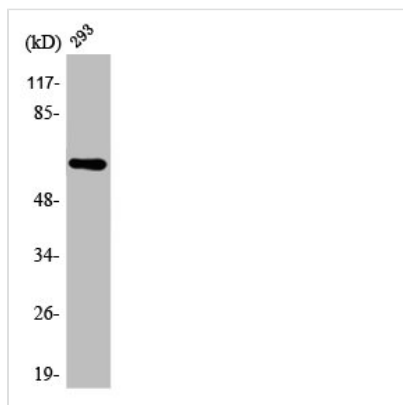




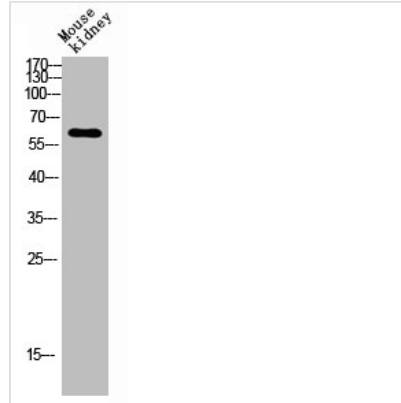
ARMCX2 Antibody

Product Code	CSB-PA000930
Storage	Upon receipt, store at -20°C or -80°C. Avoid repeated freeze.
Uniprot No.	Q7L311
Immunogen	Synthesized peptide derived from the Internal region of Human ARM CX2.
Raised In	Rabbit
Species Reactivity	Human, Mouse, Rat
Tested Applications	WB, IHC, IF, ELISA; WB:1:500-1:2000, IHC:1:100-1:300, IF:1:200-1:1000, ELISA:1:20000
Form	Liquid
Conjugate	Non-conjugated
Storage Buffer	Liquid in PBS containing 50% glycerol, 0.5% BSA and 0.02% sodium azide.
Purification Method	The antibody was affinity-purified from rabbit antiserum by affinity-chromatography using epitope-specific immunogen.
Isotype	IgG
Alias	ARM CX2; ALEX2; KIAA0512; Armadillo repeat-containing X-linked protein 2; ARM protein lost in epithelial cancers on chromosome X 2; Protein ALEX2
Immunogen Species	Homo sapiens (Human)
Target Names	ARM CX2

Image



Western Blot analysis of 293 cells using ARM CX2 Polyclonal Antibody



Western blot analysis of Mouse-kidney lysis using ARM CX2 antibody.

Usage

For Research Use Only. Not for use in diagnostic or therapeutic procedures.