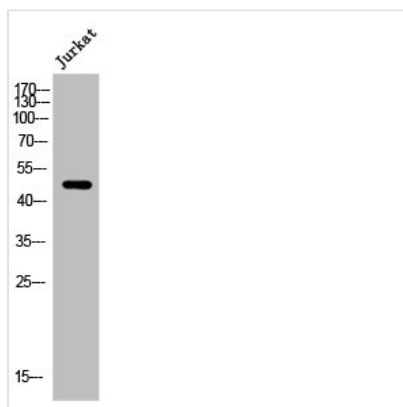




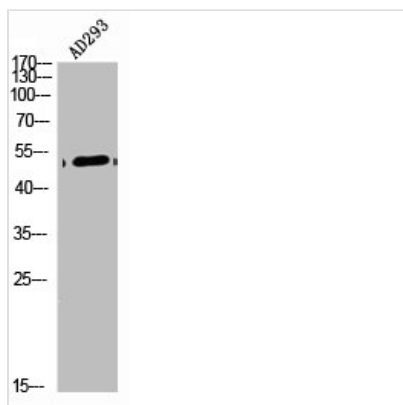
ARRDC1 Antibody

Product Code	CSB-PA000933
Storage	Upon receipt, store at -20°C or -80°C. Avoid repeated freeze.
Uniprot No.	Q8N5I2
Immunogen	Synthesized peptide derived from the Internal region of Human Arrdc1.
Raised In	Rabbit
Species Reactivity	Human,Mouse,Rat
Tested Applications	WB, ELISA; WB:1:500-1:2000, ELISA:1:20000
Form	Liquid
Conjugate	Non-conjugated
Storage Buffer	Liquid in PBS containing 50% glycerol, 0.5% BSA and 0.02% sodium azide.
Purification Method	The antibody was affinity-purified from rabbit antiserum by affinity-chromatography using epitope-specific immunogen.
Isotype	IgG
Alias	ARRDC1; Arrestin domain-containing protein 1
Immunogen Species	Homo sapiens (Human)
Target Names	ARRDC1

Image



Western Blot analysis of Jurkat cells using Arrdc1 Polyclonal Antibody



Western Blot analysis of AD293 cells using Arrdc1 Polyclonal Antibody



Usage

For Research Use Only. Not for use in diagnostic or therapeutic procedures.