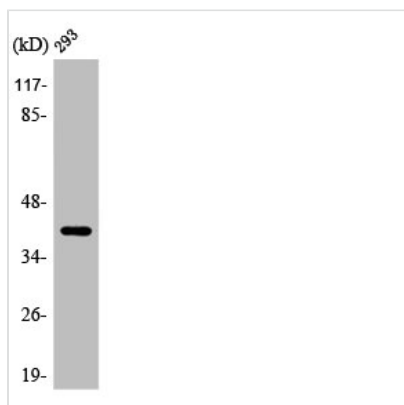




ARRDC2 Antibody

Product Code	CSB-PA000934
Storage	Upon receipt, store at -20°C or -80°C. Avoid repeated freeze.
Uniprot No.	Q8TBH0
Immunogen	Synthesized peptide derived from the Internal region of Human ARRDC2.
Raised In	Rabbit
Species Reactivity	Human, Mouse
Tested Applications	WB, IHC, ELISA; WB:1:500-1:2000, IHC:1:100-1:300, ELISA:1:40000
Form	Liquid
Conjugate	Non-conjugated
Storage Buffer	Liquid in PBS containing 50% glycerol, 0.5% BSA and 0.02% sodium azide.
Purification Method	The antibody was affinity-purified from rabbit antiserum by affinity-chromatography using epitope-specific immunogen.
Isotype	IgG
Alias	ARRDC2; PP2703; Arrestin domain-containing protein 2
Immunogen Species	Homo sapiens (Human)
Target Names	ARRDC2

Image



Western Blot analysis of 293 cells using ARRDC2 Polyclonal Antibody

Usage

For Research Use Only. Not for use in diagnostic or therapeutic procedures.