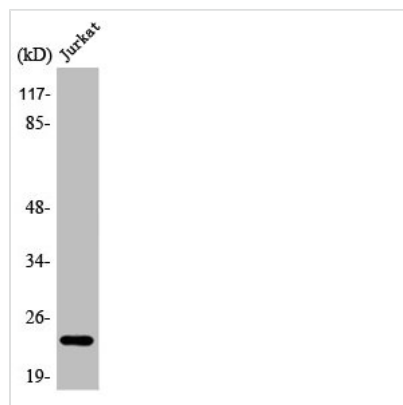




ASF1A Antibody

Product Code	CSB-PA000941
Storage	Upon receipt, store at -20°C or -80°C. Avoid repeated freeze.
Uniprot No.	Q9Y294
Immunogen	Synthesized peptide derived from the Internal region of Human Asf1a.
Raised In	Rabbit
Species Reactivity	Human, Mouse
Tested Applications	WB, IF, ELISA; WB:1:500-1:2000, IF:1:200-1:1000, ELISA:1:20000
Form	Liquid
Conjugate	Non-conjugated
Storage Buffer	Liquid in PBS containing 50% glycerol, 0.5% BSA and 0.02% sodium azide.
Purification Method	The antibody was affinity-purified from rabbit antiserum by affinity-chromatography using epitope-specific immunogen.
Isotype	IgG
Alias	ASF1A; CGI-98; HSPC146; Histone chaperone ASF1A; Anti-silencing function protein 1 homolog A; hAsf1; hAsf1a; CCG1-interacting factor A; CIA; hCIA
Immunogen Species	Homo sapiens (Human)
Target Names	ASF1A

Image



Western Blot analysis of Jurkat cells using Asf1a Polyclonal Antibody

Usage

For Research Use Only. Not for use in diagnostic or therapeutic procedures.