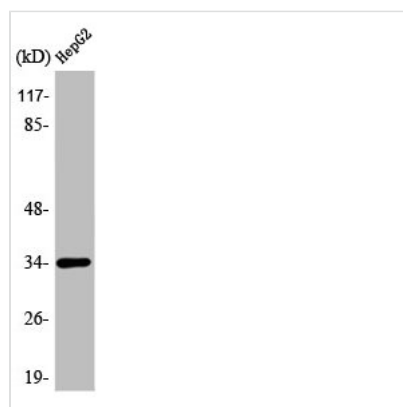




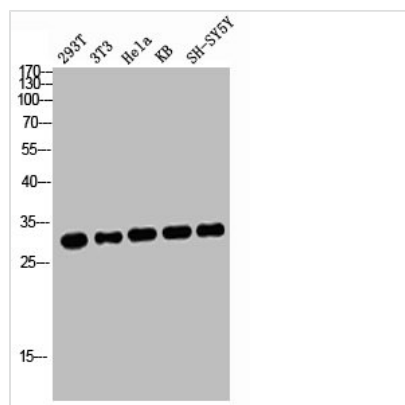
ATF1 Antibody

Product Code	CSB-PA000945
Storage	Upon receipt, store at -20°C or -80°C. Avoid repeated freeze.
Uniprot No.	P18846
Immunogen	Synthesized peptide derived from the C-terminal region of Human ATF-1.
Raised In	Rabbit
Species Reactivity	Human,Mouse,Rat
Tested Applications	WB, IHC, IF, ELISA; WB:1:500-1:2000, IHC:1:100-1:300, IF:1:200-1:1000, ELISA:1:10000
Form	Liquid
Conjugate	Non-conjugated
Storage Buffer	Liquid in PBS containing 50% glycerol, 0.5% BSA and 0.02% sodium azide.
Purification Method	The antibody was affinity-purified from rabbit antiserum by affinity-chromatography using epitope-specific immunogen.
Isotype	IgG
Alias	ATF1; Cyclic AMP-dependent transcription factor ATF-1; cAMP-dependent transcription factor ATF-1; Activating transcription factor 1; Protein TREB36
Immunogen Species	Homo sapiens (Human)
Target Names	ATF1

Image



Western Blot analysis of HeLa cells using ATF-1 Polyclonal Antibody



Western blot analysis of 293T 3T3 HELA KB SH-SY5Y lysis using ATF-1 antibody.