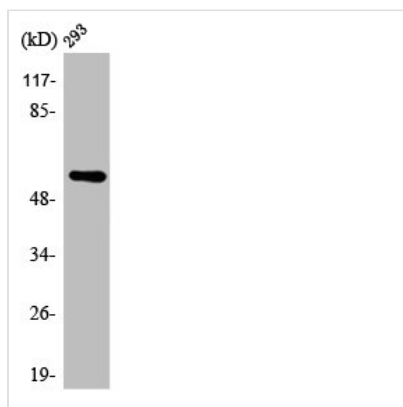




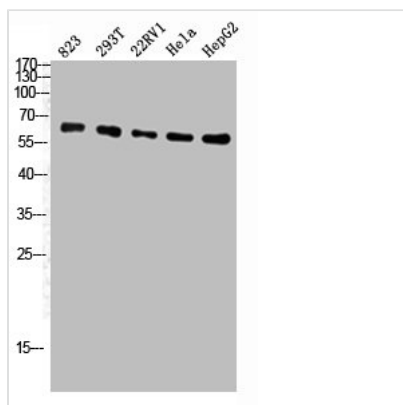
ATP5A1 Antibody

Product Code	CSB-PA000951
Storage	Upon receipt, store at -20°C or -80°C. Avoid repeated freeze.
Uniprot No.	P25705
Immunogen	Synthesized peptide derived from the Internal region of Human ATP5A.
Raised In	Rabbit
Species Reactivity	Human,Mouse,Rat
Tested Applications	WB, IHC, ELISA; WB:1:500-1:2000, IHC:1:100-1:300, ELISA:1:40000
Form	Liquid
Conjugate	Non-conjugated
Storage Buffer	Liquid in PBS containing 50% glycerol, 0.5% BSA and 0.02% sodium azide.
Purification Method	The antibody was affinity-purified from rabbit antiserum by affinity-chromatography using epitope-specific immunogen.
Isotype	IgG
Alias	ATP5A1; ATP5A; ATP5AL2; ATPM; ATP synthase subunit alpha; mitochondrial
Immunogen Species	Homo sapiens (Human)
Target Names	ATP5A1

Image



Western Blot analysis of RAW264.7 cells using ATP5A Polyclonal Antibody



Western Blot analysis of 823 293T 22RV1 HeLa HepG2 cells using ATP5A Polyclonal Antibody



Usage

For Research Use Only. Not for use in diagnostic or therapeutic procedures.