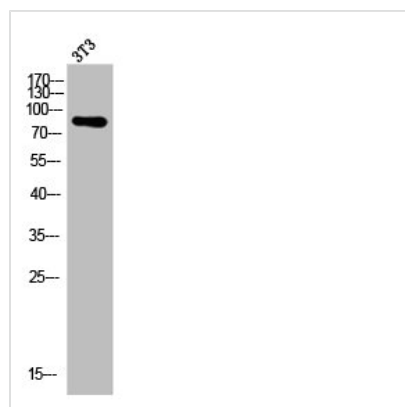




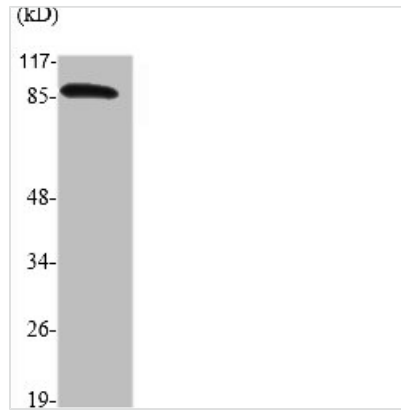
ATRIP Antibody

Product Code	CSB-PA000958
Storage	Upon receipt, store at -20°C or -80°C. Avoid repeated freeze.
Uniprot No.	Q8WXE1
Immunogen	Synthesized peptide derived from Human ATRIP around the non-phosphorylation site of S68.
Raised In	Rabbit
Species Reactivity	Human,Mouse,Rat
Tested Applications	WB, IHC, IF, ELISA; WB:1:500-1:2000, IHC:1:100-1:300, IF:1:200-1:1000, ELISA:1:5000
Form	Liquid
Conjugate	Non-conjugated
Storage Buffer	Liquid in PBS containing 50% glycerol, 0.5% BSA and 0.02% sodium azide.
Purification Method	The antibody was affinity-purified from rabbit antiserum by affinity-chromatography using epitope-specific immunogen.
Isotype	IgG
Alias	ATRIP; AGS1; ATR-interacting protein; ATM and Rad3-related-interacting protein
Immunogen Species	Homo sapiens (Human)
Target Names	ATRIP

Image



Western Blot analysis of 3T3 cells using ATRIP Polyclonal Antibody



Western Blot analysis of various cells using ATRIP Polyclonal Antibody

Usage

For Research Use Only. Not for use in diagnostic or therapeutic procedures.