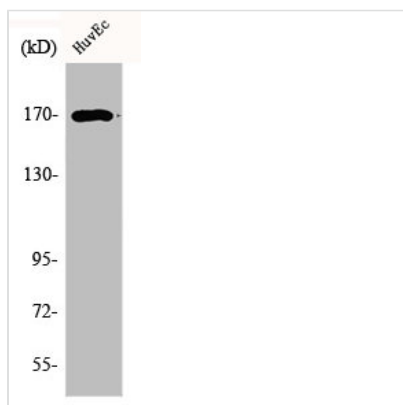




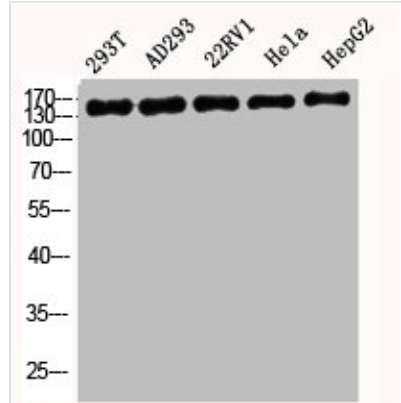
SMARCC2 Antibody

Product Code	CSB-PA000969
Storage	Upon receipt, store at -20°C or -80°C. Avoid repeated freeze.
Uniprot No.	Q8TAQ2
Immunogen	Synthesized peptide derived from the Internal region of Human BAF170.
Raised In	Rabbit
Species Reactivity	Human, Mouse
Tested Applications	WB, IF, ELISA; WB:1:500-1:2000, IF:1:200-1:1000, ELISA:1:10000
Form	Liquid
Conjugate	Non-conjugated
Storage Buffer	Liquid in PBS containing 50% glycerol, 0.5% BSA and 0.02% sodium azide.
Purification Method	The antibody was affinity-purified from rabbit antiserum by affinity-chromatography using epitope-specific immunogen.
Isotype	IgG
Alias	SMARCC2; BAF170; SWI/SNF complex subunit SMARCC2; BRG1-associated factor 170; BAF170; SWI/SNF complex 170 kDa subunit; SWI/SNF-related matrix-associated actin-dependent regulator of chromatin subfamily C member 2
Immunogen Species	Homo sapiens (Human)
Target Names	SMARCC2

Image



Western Blot analysis of COLO205 cells using BAF170 Polyclonal Antibody



Western Blot analysis of 293T AD293 22RV1 HELA HepG2 cells using BAF170 Polyclonal Antibody

Usage

For Research Use Only. Not for use in diagnostic or therapeutic procedures.