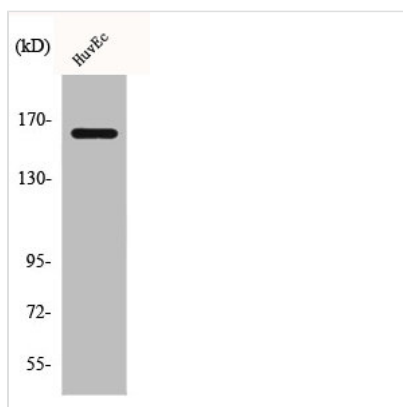




BCR Antibody

Product Code	CSB-PA000989
Storage	Upon receipt, store at -20°C or -80°C. Avoid repeated freeze.
Uniprot No.	P11274
Immunogen	Synthesized peptide derived from Human Bcr around the non-phosphorylation site of Y177.
Raised In	Rabbit
Species Reactivity	Human, Mouse
Tested Applications	WB, IHC, ELISA; WB:1:500-1:2000, IHC:1:100-1:300, ELISA:1:20000
Form	Liquid
Conjugate	Non-conjugated
Storage Buffer	Liquid in PBS containing 50% glycerol, 0.5% BSA and 0.02% sodium azide.
Purification Method	The antibody was affinity-purified from rabbit antiserum by affinity-chromatography using epitope-specific immunogen.
Isotype	IgG
Alias	BCR; BCR1; D22S11; Breakpoint cluster region protein; Renal carcinoma antigen NY-REN-26
Immunogen Species	Homo sapiens (Human)
Target Names	BCR

Image



Western Blot analysis of HuvEc cells using Bcr Polyclonal Antibody

Usage For Research Use Only. Not for use in diagnostic or therapeutic procedures.